

Cheetah Chatter

Published by Meridian Park Elementary School and the Meridian Park PTSA

Shoreline Special Election on February 13 (*Remember to Vote!*)

At their November 6, 2017 meeting, the Shoreline School District Board of Directors unanimously approved resolutions to place **two four-year replacement levies** on the February 13th special election ballot. These levies would replace existing levies that will expire at the end of 2018.



For specific details on Propositions 1 and 2:
<https://www.shorelineschools.org/domain/1334>

Ballots were mailed to registered voters on January 24th. **Ballots must be returned or postmarked by February 13, 2018.** Both levies require a **50% simple majority** approval to pass.

Reminder: there are *TWO* sides to the ballot; be sure to vote on *BOTH* propositions!

For general information regarding returning your ballot or for the location of ballot drop boxes, visit: <https://www.kingcounty.gov/depts/elections/how-to-vote/ballots/returning-my-ballot.aspx>

And, if you're interested in being a "sign waver" to help promote levy voting, click this link to sign up! <http://signup.com/go/sejEDNv> **Thank You!!**

Shoreline Highly Capable Testing Registration

Registration for the Highly Capable (Hi Cap) Program Assessment is currently open to all Shoreline students with the exception of 2nd graders – see note below.

Link to Registration:

<https://goo.gl/forms/Tud6Z1031cd3Ti0R2>

Please Note: This registration is open to all students EXCEPT 2nd graders. *All Shoreline 2nd graders will be screened for the Highly Capable program at the end of February*, and do not need to register for testing.

The deadline for registration is 4:30 pm this Friday, February 9th

Testing will occur in your student's school over 2 days during the weeks of March 12th - March 23rd. **Students must attend both days of testing** to be eligible for the Hi Cap program. You will be contacted after registration with the specific date and time for testing.

If you have any questions or have difficulty registering online, please contact the **Highly Capable Program office** at (206) 393-4771 or via e-mail at highlycapable@shorelineschools.org.



Lost and Found

Please remind your students to **recover items from the Lost and Found by Friday, March 2nd.** Unclaimed items will be donated to The Works.

Inside This Issue

Announcements.....	2
Principal's Letter	4
Cheetah Notes.....	5
Student Council Profiles.....	7
Community News/Resources.....	8

Upcoming Events

Thursday, February 8

Gifted Education Day
Olympia, Washington

Thursday, February 8

MP Skating Party
 6:00 pm - 8:00 pm
Lynnwood Bowl and Skate

Thursday, February 8

Kindergarten Valentine Celebration
 6:00 pm - 7:30 pm
MP Cafeteria

Friday, February 9

Report cards to be sent home

Tuesday, February 13

Shoreline Special Election
Please Vote!

Friday, February 16

Student Council Spirit Day: "Twin Day"

Monday, Feb 19 – Friday, Feb 23

President's Day and Mid-Winter Break
No School

Monday, March 5

Non-Student Staff Work Day
No School

Tuesday, March 6 - Friday, March 9

Parent-Teacher Conferences
Early Release

Tuesday, March 6

PTSA Board of Directors Meeting
(all are welcome!)
 7:00 pm - 8:30 pm
MP Library

Wednesday, March 7

6th Grade Einstein Middle School
Informational Meeting
 7:00 pm - 8:00 pm
Einstein Middle School

Saturday, March 10

Shoreline Math Olympiad
 8:00 am - 3:00 pm
Shoreline Community College

Announcements

Wizard of Oz, Jr.

The cast is set for **WIZARD OF OZ, JR.** and our students have been working hard to memorize their lines and learn their parts! ***Ticket sales open later this month***, so watch for a flyer to come home soon. They make great gifts for family, neighbors, and friends!



Performances will be Friday, March 16th and Saturday, March 17th at Shorecrest High School.

Meridian Park Skating Party - February 8



Join your MP classmates for an evening of skating at Lynnwood Bowl & Skate (6210 200th Street SW, Lynnwood) from 6:00 pm - 8:00 pm. Admission is **\$7.00** and includes quad skate rental. Pay an additional **\$3.25** for inline skates. Parents are encouraged to participate! **No drop-offs allowed.** Feel free to bring your helmet.

Hope to see you there!

Box Tops Update



Meridian Park PTSA recently received a check from Box Tops for **\$392.80!!** All of our hard work clipping those little Box Tops is paying off for our kids!

The next submission will be mailed the end of February so ***get your Box Tops to Meridian Park before mid-winter break.***

Happy cutting and submitting Box Tops!

6th Grade Parents - Save the Date

6TH GRADE PLANNING SESSION FOR "MOVING ON" CEREMONY AND CROMWELL PARK CLASS PARTY

7:00 pm - Tuesday, April 24th (location TBD)

If you are the parent of a 6th grader and would like to help with planning the June "Moving On" ceremony and class party at Cromwell Park, **please let us know.** We need your ideas, participation, and creativity!

Contact **Susan Duthweiler** at: sduthweiler@gmail.com, or **Linda Tsai** at: neonfish@comcast.net

Friday PTSA Parent Coffees



8:50 am (we try) - 9:30 am. Come get a cup of coffee and run, or stay and visit with other parents, or help out your teacher or librarian! You can even check emails on the school's wi-fi. We will post the password for **Guestnet** on the coffee cart on **FRIDAYS!** Passwords change daily; check for it at Suzy Cowgill's desk in the office.

If you would like to volunteer with coffee setup at 8:40 am or tear down at 9:30 am, send an email to naomihillyard@gmail.com.

PTSA Spring Grant Applications

The Meridian Park PTSA has **\$1,500** of funding available to support enrichment, unique learning opportunities, and program enhancement. **Grant applications are due Thursday, March 1st.** Please visit the MPPTSA website (www.mpptsa.org) for more information, or email mpptsagrants@gmail.com.

Thank you for your fundraising and donation efforts, which makes these grants possible!

2018-2019 Cheetah Chatter Opportunities

Do you revel in gathering information, sharing news, working with others, and being "in the know"?

Are you a natural proofreader with an eye for detail who enjoys design and desktop publishing?

Would you like to volunteer for the PTSA or school, but have difficulty finding time due to other obligations?

The PTSA Communications team will have two openings effective next Fall for a **CONTENT EDITOR** and **LAYOUT EDITOR** for the monthly *Cheetah Chatter* newsletter.

We'd love to add you to the team! If you are interested or have questions, please contact Linda Tsai and Diana Gray at: mpptsanewsletter@gmail.com

Announcements

Help Us Speak Your Language!

Outside our Family Advocate's office is a bulletin board that needs some completion.



If your family speaks a language other than English, please fill out one of the speech bubbles.

Ms. Annie's hope is that we might all try welcoming words in another's language, the language that "goes to their heart," in the words of Nelson Mandela.



Shoreline Math Olympiad

March 10th at Shoreline Community College



This event is open to all students in grades 4-6; ***Math Club membership is not required.*** Upon arrival, students will sign in, and each group will receive a 3-test schedule: two group tests and one individual. The schedule will move them around the Shoreline Community College campus for the challenging and brain-stimulating timed tests with just enough time in between for a quick snack and to visit with their groups. Then it will be time to enjoy some pizza and head into the gymnasium for entertainment and accolades. ***Help your student to put together a team of 4 with an adult chaperone, or ask to join another group.***

Due date is February 12! Please complete the **orange** Math Olympiad permission slips that were recently sent home with 4th-6th graders and return to school by the 12th. You will receive an email of all the details for March 10th, and one group practice will be scheduled before-hand (attendance not mandatory, just preparatory).

MaKiNg MaTh FuN is the goal, and Math Olympiad does not disappoint!

Cheetah Cheers!

Thank you to everyone who came to **THE MPPTSA VARIETY SHOW**. We laughed, we cheered, and we were moved by the performances. ***Meridian Park students are so talented and brave!***

THANK YOU to everyone who donated money during our ***"Pass the Boot" fundraiser*** right before the show started. After all was accounted, ***we raised over \$400.*** We know that there were many grandparents, aunts, uncles, friends, and neighbors in the audience, and they were happy to be able to contribute money to our wonderful school. **AND**, our ***6th Grade Camp Fundraiser*** was able to raise ***\$435 in concession sales!*** Your generosity makes all the difference.

THANK YOU TO DR. HOWARD JUE FOR SPONSORING THE EVENT!

If you own a business or work for a business that would like to sponsor an event at Meridian Park Elementary, contact naomihillyard@gmail.com



Shoreline STEM Festival - May 5th

DO YOU LOVE SCIENCE AND ART?

The Shoreline STEM Festival is set to take place on **May 5th** at Shoreline Community College, with a K-12 student science fair, hands-on STEM fun, and robotics demonstrations! Now is the time to start a project for the **science fair** with **three categories** to choose from: ***Science Investigation***, ***Engineering Design and Invention***, and ***Computer Science Design and Invention***. You'll find guidelines and links to resources on the ShorelineSTEM website. All entries will require the submittal of a project proposal. Turn yours in by April 6th. Registration and entrance to the festival are all completely **FREE!**

Young artists - Design the festival t-shirt! The deadline for design submissions is March 11th. Requirements are on the ShorelineSTEM website.

Parents - ShorelineSTEM needs volunteers to make the festival happen! Sign up on the ShorelineSTEM website to find out how you can help.

Sponsorship - ShorelineSTEM also needs funds and/or donations to keep the festival running. Please see the attached sponsorship sheet with the details.

Details for everything can be found at the festival website:

www.shorelinestem.org

or email
shorelinestemfestival@gmail.com

Principal's Letter

DEAR FAMILIES:

We are super proud of our super star Cheetahs for first semester learning and growth! Students will carry home progress report envelopes on **February 9**. Your teacher will also contact you to schedule a conference the week of **March 5**. While we are happy to discuss the progress report and we value our regular communication, thanks for holding your questions until March.

Recess is important. *Thanks to the generosity of the Shoreline Foundation and the Dale Turner YMCA, we are adding a YMCA Recess Coach two days per week, 11:00 am – 1:00 pm.* It's called: **Play Everyday Recess Coach Program**, and we are hopeful this extra support will start in March. **If you can volunteer at recess**, even just one day per week, please contact **Jill** in the office with your name and availability.



As we approach our mid-year celebrations of learning and growth on February 14 or 15, we appreciate our partnership regarding the district's updated Wellness/Nutrition Policy that requires class parties include **healthy snacks and treats**. More information can be found at the link below.

In February, we are practicing **KINDNESS**. On behalf of the staff, please know how grateful we are for your student(s) and family. We hope you will vote and mail or drop your ballot by February 13, and please don't hesitate to contact a staff member or myself at any time.

Meridian Park is a great school, **ONE COMMUNITY - STRONGER TOGETHER**, because of all we do **together**.



Thank you,
David Tadlock, Principal

Tadlock Tip #6

We model in almost everything we do and say, and our kids learn as much from adult actions and words as they do from other learning experiences. I encourage all of us to reflect on our habits, words, actions, and interactions. Let's model kindness, and in general, let's be positive adult role models for our students.

Reminders

SAFETY REMINDER: STUDENTS WALKING TO/FROM SCHOOL

Please help keep walkers safe. Students should cross streets **only at intersections** and **only with adult supervision**. While we allow grades 5 and 6 to walk alone, we prefer adults walk with kids, and we require adults to walk with students grades K-4. Thanks for helping us keep kids safe.

WELLNESS POLICY LINK

<https://www.shorelineschools.org/Page/1265>

LOOKING AHEAD: IMPORTANT DATES FOR THE 2018-19 SCHOOL YEAR

Monday, August 13, 2018 – Meridian Park Elementary office opens
Wednesday, August 29, 2018 – **FIRST DAY OF SCHOOL**

Shoreline School District #412 does not discriminate against any protected classes. For further information on notice of nondiscrimination, including the address and phone number of the Title IX officer, visit http://www.shorelineschools.org/info/title_ix.php

Cheetah Notes

Kindergarten Program at Meridian Park

HI MERIDIAN PARK KINDERGARTEN FAMILIES,

Our Meridian Park monthly Cheetah theme for February is **Kindness**, and we will be focusing on many efforts together to build our kindness muscles! This month in our classrooms we will read several books together highlighting our monthly theme, such as *Have You Filled a Bucket Today*. Throughout our school year, we will continue to work on extending kindness to one another in many ways. If you would like to join us in our efforts to practice intentional kindness, you can download a copy of a **Family Kindness Challenge handout** (translated into English, Spanish, French and Mandarin) at: thegreatkindnesschallenge.com/familychecklist. After mid-winter break, we look forward to rolling out a special recess effort to help spread kindness... stay tuned for more information on how students can get involved!



A number of benefits have been reported to support intentional efforts to teach kindness. The article link below summarizes many of the social, emotional, physical and academic benefits of helping our students grow their kindness muscles every day in our school and homes:

<http://www.edutopia.org/blog/teaching-kindness-essential-reduce-bullying-lisa-currie>

We would love to hear how you and your family are doing with your kindness challenge at home. If you are taking any pictures of your acts of kindness and are interested in sharing them with us, we'd love to celebrate our efforts as a community. Please email photos for our bulletin board to: kim.kauffman@shorelineschools.org

Lara Drew, Administrator

From the Library/Media Center



At Meridian Park, students have access to many **ELECTRONIC RESOURCES**, including online encyclopedias and databases. Some of these resources are district subscriptions, while others are available through a special program with King County Library System.

The *links for these resources are located on the Meridian Park homepage*. Simply go to the MP homepage, find "students", then click on "learning tools". Here is the link:

<https://www.shorelineschools.org/domain/394>

The **username/login and passwords** for the various resources are:

King County Library Partnership with Shoreline S. D.

Access a variety of electronic resources.

Each student has his/her own login information.

Username – 412+student number

Password – the last four digits of the student number

Britannica Online

Geared toward elementary-age students, with a separate component for PreK – 2nd Grade.

Login – MPES

Password – 412

SIRS Discoverer

Online encyclopedias and search tools for elementary students.

(more user-friendly than eLibrary)

Login – w412empark

Password – welcome

eLibrary

An online database of resources for students, including newspapers, magazines, books, maps, pictures, transcripts, and audio/visual materials.

Login – w412empark

Password – welcome

CultureGrams

An online database about countries and cultures of the world.

Login – w412empark

Password – culture

In addition, we have our very own **eBook Library at Meridian Park**. These books are available all the time, day or night, weekday or weekend. You can "check them out" whenever you like, on a school computer or a home device. The link to our eBook Library is <http://www.mycapstonelibrary.com/login/index.html>.

Login – mpark
Password – school

I will hold parent and student workshops to learn more about these truly fantastic resources. Please come to the Library during one or more of the following sessions!

Tuesday, March 6, 6:15–7:00 pm (before the PTSA mtg)

Wednesday, March 7, 2:00–2:45 pm

Thursday, March 8, 4:00–4:45 pm

I hope to see you at one of these workshops!

Jenny Hillger, Teacher/Librarian

Cheetah Notes

Counselor's Corner

Meridian Park's PBIS (positive behavior intervention and supports) monthly theme for February is:

kindness

...to have and show empathy – not just feeling sorry for someone, but when seeing what they're going through, showing compassion – and doing things for others simply because it's **KIND**.

We already see our great students practicing kindness in many places around the school: holding doors for each other, helping pick up dropped papers, sharing supplies, inviting others to play, and even a simple smile, just to name a few. We'll be on the lookout for more acts of kindness throughout February and will reward students demonstrating this theme (classroom voting or teacher selection) in our monthly VIC lunch.

Please see the **booklist** from Mollie Merkley and Jenny Hillger for great ideas on how to incorporate more learning about kindness:

<https://www.shorelineschools.org/Page/2893>

Katie McCain
School Counselor
Meridian Park Elementary
(206) 393-1785

From the Health Office

FLU SEASON IS HERE!

Flu is a serious contagious disease that can lead to hospitalization and even death. You have the power to protect yourself and your family this season with these three actions to fight flu:



1. **Get a flu vaccine.** Everyone 6 months of age and older should get a flu vaccine by the end of October, if possible. A yearly flu vaccine is the first and most important step in protecting against the flu. As long as flu viruses are circulating, it is not too late to get vaccinated!
2. **Take everyday actions to stop the spread of germs.** Wash your hands often with soap and water, cover your nose and mouth with a tissue when you cough or sneeze, and avoid touching your eyes, nose, and mouth. If you become sick, limit your contact with others to keep from infecting them.
3. **Take flu antiviral drugs if your doctor prescribes them.** Medicine in the form of antiviral drugs can be used to treat the flu. Antiviral drugs can make the illness milder and shorten the time you are sick. They may also prevent serious flu complications.

Please feel to call the Health Office at (206) 393-4124 if you have questions.

From Mrs. Anderson and the Meridian Park Singing Cheetahs

HAPPY FEBRUARY TO THE FABULOUS FAMILIES OF MERIDIAN PARK!

Congratulations to Meridian Park 6th grade students who participated in the **West Side Choral Festival** at Shorewood High School on February 1st. You represented our school beautifully!



LOOKING AHEAD:

5th grade and 5th/6th grade classes will be taking a field trip to **Seattle Symphony's Concert "Link Up: The Orchestra Rocks"** at Benaroya Hall on Wednesday, March 14th at 12:15 pm.

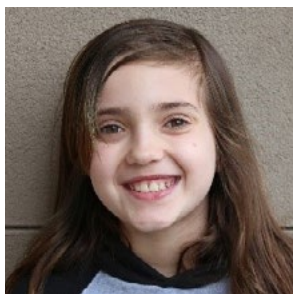
Please mark your calendars for the **Meridian Park Arts Festival** on Thursday, May 25th from 6:30 pm - 7:15 pm. 2nd*, 3rd, and 4th grade classes will perform!

*(2nd grade performance also includes the 1st grade students in Ms. Uran's and Ms. Clark's classes)

Ms. Barnes' and Ms. Loes' 1st grade classes will have their concert on Tuesday, June 5th, at the **PTSA meeting**.

6th grade will perform on Thursday, June 21st, at 9:30 am during their **Moving On celebration**.

Student Council Profiles



Stella Erickson Cuellar

SECRETARY

What made you decide to join Student Council this year?

I love writing, and I think that being secretary is fun. I also think Student Council can make school a better place.

What is your favorite thing about Meridian Park?

I love my teacher and seeing happy students.

What is one thing you would like to accomplish during your time on Student Council?

I would like to help raise \$1,000. I would like to ask students to donate to Children's Hospital.



Ella Emmanuel

EXECUTIVE COUNCIL MEMBER

What made you decide to join Student Council this year?

I wanted to help improve the school.

What is your favorite thing about Meridian Park?

The friendships and how everyone knows each other.

What is one thing you would like to accomplish during your time on Student Council?

I would like to improve the student store.



Mary Walker

PUBLICIST

What made you decide to join Student Council this year?

I thought it would be a good experience for the future, and for right now. So far, it definitely has been.

What is your favorite thing about Meridian Park?

My favorite thing about Meridian Park are the people. The ones I get to work with on student council are great, as well as most people at Meridian Park in general.

What is one thing you would like to accomplish during your time on Student Council?

One thing I would definitely like to accomplish during my time on student council is to have this year be one of the best years we've had.

Alister Anderson

PRESIDENT

What made you decide to join Student Council this year?

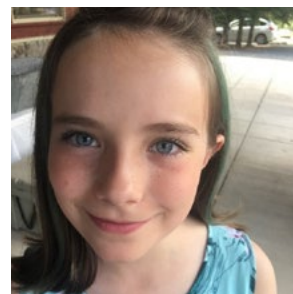
I wanted a chance to try leadership in the school, to help raise money, and to have awesome Spirit Days.

What is your favorite thing about Meridian Park?

My favorite thing about Meridian Park is the awesome school activities that we do – like Field Day, Walkathon and Drama.

What is one thing you would like to accomplish during your time on Student Council?

One thing I would want to accomplish in Student Council is to make the school an even more "bully free" zone and to make school super fun.



Brigid Collins

EXECUTIVE COUNCIL MEMBER

What made you decide to join Student Council this year?

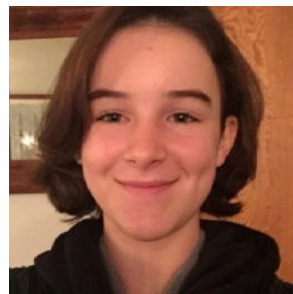
I wanted to make a change in the school and get a taste of democracy in action.

What is your favorite thing about Meridian Park?

The atmosphere and having everyone welcoming.

What is one thing you would like to accomplish during your time on Student Council?

To have almost everyone in the school participate in a Spirit Day.



Robert Banchemo

EXECUTIVE COUNCIL MEMBER

What made you decide to join Student Council this year?

Mostly passion and friends.

What is your favorite thing about Meridian Park?

The council.

What is one thing you would like to accomplish during your time on Student Council?

Student store.



Community News/Resources

Meridian Park Elementary

www.shorelineschools.org/meridianpark/

David Tadlock, Principal
david.tadlock@shorelineschools.org

Lara Drew, Kinder Administrator
lara.drew@shorelineschools.org

Hillery Clark, Director of Early Learning

Jill Gwazdauskas, Registrar

Diane Randall, Office Manager

Suzy Cowgill, Kinder Office Manager

Tama Leahy, School Nurse

Katie McCain, Counselor

Kim Kauffman, Kinder Counselor

Annie Gage, Family Advocate

Micaela Katz, Kinder Family Advocate

2017-2018 MP PTSA

mpptsa.org



Executive Committee

Callie Steward / Naomi Hillyard,
Co-Presidents

mpptsapresident@gmail.com

Meghan Jernigan, Secretary
mpptsasecretary@gmail.com

Joy Rieke / Ann Yee, Co-Treasurers
mpptsatreasurer@gmail.com

Mary Kate Horwood, VP Events
mpptsavpevents@gmail.com

Briana Bell, VP Clubs/Programs
mpptsavpprograms@gmail.com

Standing Committees

Suni Tolton / Mary Webb, Grants
mpptsagrants@gmail.com

Janet Shin / Nauko Grimlund,
Membership
mpptsamemberships@gmail.com

Nancy Beuhler Jenkins,
Volunteer Coordinator
mpptsavolunteers@gmail.com

Linda Tsai / Diana Gray,
'Cheetah Chatter' Editors
mpptsanewsletter@gmail.com

Heather Sterling, Webmaster
mpptsawebsite@gmail.com

Jiovanna Koceski, Friday Email Blasts

Hannah Peterson / Lara Gino,
Teacher Representatives

Follow the MP PTSA on Facebook

facebook

Cheetah Chatter is published monthly by

Meridian Park Elementary and
the Meridian Park PTSA

Under Our Skin: What Do We Mean When We Talk About Race?



Saturday, February 10th, 2:00 pm

Shoreline City Hall, 17500 Midvale Avenue North

Explore *The Seattle Times'* **Under Our Skin** video project around race and inclusiveness. Discussion will challenge your assumptions, inspire you to think and talk about issues of race in a deeper way and help build common ground.

Please RSVP to **Denise Bugallo**, King County Library System Regional Manager, at (206) 362-7550 or dbugallo@kcls.org.

United Way of King County Free Tax Preparation Services



United Way is offering **FREE** tax preparation services online and at 30 locations throughout King County **now through April 19**. **Households making under \$66,000** can have their taxes prepared by a certified tax preparer, and they can get connected to other community resources

and public benefits. Click [HERE](#) for information on what to bring and a list of locations. Locations in Shoreline include Shoreline Hopelink, Shoreline Goodwill, and Shoreline Community College.

United Way is also offering their free online tax tool at www.MyFreeTaxes.com.

Contact **Evan Walker**, Financial Empowerment AmeriCorp at United Way of King County at (206) 461-4530 or ewalker@uwkc.org for more info.

The Lifeline Program – Free Cell Phones

Access Wireless provides mobile phone service to income-eligible residents as part of the government-funded Lifeline Assistance program. Lifeline is intended to help individuals experiencing financial hardship stay connected to family members, schools and child care providers, as well as be reachable to potential employers and have a means of communicating in case of an emergency. The valuable service that Lifeline provides is designed to be a bridge for those striving for self-sufficiency.



Access Wireless provides customers with a free mobile phone and a free monthly allotment of minutes, text messages, and data each month. For more details on what is included with Access Wireless, please visit <https://www.accesswireless.com/lifeline>.

Access Wireless provides customers with a free mobile phone and a free monthly allotment of minutes, text messages, and data each month. For more details on what is included with Access Wireless, please visit <https://www.accesswireless.com/lifeline>.