

Cheetah Chatter

Published by Meridian Park School & Meridian Park PTSA

FOR 2016-2017 KINDERGARTNERS:

WAKIDS NON-STUDENT DAYS ON SEPT 16, 30, & OCT 7

In the 2016-2017 school year, all Shoreline kindergarten classrooms will have three additional non-student (no school) days to implement the family connections component (<http://www.k12.wa.us/WaKIDS/Family/default.aspx>) of the Washington Kindergarten Inventory of Developing Skills (WaKIDS) (<http://www.k12.wa.us/WaKIDS/pubdocs/WhatsWaKIDS.pdf>).

The kindergarten non-student days will be on the following Fridays: September 16, September 30 and October 7.

Individual meetings between teachers and families on those days will provide an opportunity for families to meet with their child's kindergarten teacher at the beginning of the school year. These one-on-one meetings are intended to welcome families to school and provide a safe environment for families to speak freely with the teacher. They help families and teachers begin to build relationships so that they can work together to help children be successful in school.

If you have any questions about WaKIDS or the family component, please feel free to speak with your child's teacher or principal.

VOLUNTEERS NEEDED FOR FIELD DAY - JUNE 17

Field Day is approaching soon, and we need your help! The event will be held on **Friday, June 17, from 1:00 p.m. – 3:15 p.m.** This is one of the main highlights of the year for many kids, and we need lots of family support to make it successful. Contact Matt Reiman at matt.reiman@shorelineschools.org if you are willing and able to help!

NATURAL LEADERS FAMILY BINGO NIGHT - JUNE 17

All Meridian Park families are welcome to celebrate the end of the school year with Natural Leaders on **Friday, June 17, from 6:00 p.m. to 7:30 p.m. at the MP cafeteria.** Students will assist as bingo callers, and small prizes will be awarded for bingos and blackouts. Dinner will be provided. Please bring a dessert to share. For additional info, please contact Annie Gage at annie.gage@shorelineschools.org or at (206) 393-1768.

INSIDE THIS ISSUE

Announcements	1
Principal's Letter	2
Meridian Park News	4
Cheetah Cheers	6
Cheetah Notes	7
PTSA President's Letter	10
PTSA News	10
Resources for Families	11

UPCOMING EVENTS

June 7

PTSA Meeting and Volunteer Appreciation

6:30 p.m. - 8:00 p.m.

MP Library

June 13

**Staff Work Day
No School**

June 17

Field Day

1:00 p.m. - 3:15 p.m.

June 17

Natural Leaders Family Bingo Night

6:00 p.m. - 7:30 p.m.

MP Cafeteria

June 23

6th Grade "Moving On" Ceremony

9:30 a.m. - 11:00 a.m.

June 24

Last Day of School

Principal's Letter



Dear Families,

This has been another amazing year at MP! Because of our hard working staff, wonderful students, and parent partnership, we continue to learn and grow. During these final days before summer break, we are committed to preparing each student for next year.

Our teacher teams are working carefully to create class lists for the fall. With two kids of my own, I know the many feelings and challenges involving class assignment. At MP, we are intentional about creating classes that are balanced, provide opportunity for student success, and are a good match for teacher, student, and family. Teachers collaborate in teams and consider many important factors, including social dynamics, learning and teaching styles, and class size. There are also challenges related to the two programs and limited number of classes per program. We will do our best and appreciate your trust.

Combination classes are likely and are great opportunities for a multi-age learning environment and smaller math classes. There's also the possibility of class assignment changes after school starts. Because of enrollment changes over the summer and the first week of school, we might need to move students the first week. Per district procedure, teacher and student assignments are tentative and re-assignments might be required after school begins and actual enrollment can be verified. These changes, however, will be done as early as possible to provide as little disruption as possible. We will make every effort to avoid changing classes after the first day.

There are so many highlights from this year! I appreciate that even as a great school, we continue to grow and improve. Our staff cares about providing a positive, balanced experience for all students. Our kids had wonderful experiences in Music, PE, Library, and with Art. Recess was full of exercise, fresh air, and a bit of rain. As a community, we celebrated diversity, art, fitness, talent, and much more. MP is a wonderful and growing story, full of all the special experiences we provide for our students. We appreciate your support and everyone's efforts:

- * **Classroom teachers** for academic and social support
- * **Specialist teachers** for enrichment with art, music, PE, library and other areas
- * **Support staff** enriching the school and classroom experience
- * **Everyone** who makes **Art** special in our school
- * **PTSA** for activities, funding, communication, and being our partners in education
- * **Volunteers** for all your time and talents

Principal's Letter

We have the best group of classified support staff, including **Diane, Jill, Annie, Tama, Lue/Jim/Gary**, and **our awesome supervisors, crossing guards, and para-educators**. Congratulations to **Julie Harris**, who will be moving into an instructional coaching role; and also to **Stephanie Smolen**, who will be moving into a full time teaching role, both at MP. Best wishes to **Jodi Steele** and her family who are moving out of state to begin a new adventure closer to family. We also congratulate and thank **Aissa Quezada** who is taking a leave of absence to teach sixth grade in Quito, Ecuador.

Our office opens August 8, and school starts on September 7. Please contact us right away if your plans change for next year. **Our PTSA Back-to-School BBQ and "Meet the Teacher"** will be **Thursday, September 1, in the evening**. **Curriculum Night** will be **Thursday, September 15**.

Congratulations to our Sixth Graders, Shorewood Class of 2022; and welcome Kindergarten Class of 2029! **Thank you for sharing your children and family with us.** We are an outstanding school community because of our amazing staff and families, and it's a privilege to be your principal. Have a great summer — traveling, playing, swimming, reading, and lots of quality time together. We look forward to seeing eager & smiling faces in the fall!

David Tadlock, Principal

david.tadlock@shorelineschools.org

TADLOCK TIP #10

Summer is an important time for rest, exercise, and routine. The more you can maintain good routines for yourself and your students, the more the family will be ready for the transition in the fall. Please read together, play lots of board games, limit screen time, and play outside.

DATES TO HIGHLIGHT

AUGUST 8

MP Office Opens for 2016-17

SEPTEMBER 1

Back-To-School BBQ and "Meet the Teacher"

SEPTEMBER 7

First Day of School

SEPTEMBER 15

Curriculum Night



Meridian Park News

BOX TOP BONANZA FOR MP FAMILIES!

Thank you for your continuous clipping, gluing, and taping of Box Tops for Education month after month this school year. Over the last nine months, you've turned in **7,350 box tops! WOW!**

We didn't quite meet our \$1,000 goal, but **\$735.60** is incredible support for the kids, and the MP PTSA is so grateful for your contributions. **Thank you!** There's still another month left of this school year, so if you're up to it, **keep on clippin'!** Please use the attached [Box Top collection sheet](#).

Starting in September, amazing MP parent, **Suzy Cowgill**, will be your new Box Tops for Education Coordinator. Keep clipping over the summer to get a good jump on next year's goal. Thank you so much!

Amy Poffenbarger

YEARBOOK SALES



Yearbooks will be available for purchase during the week of June 20 (the last week of school). They will be sold at the front of the school, from 8:40 a.m. - 9:00 a.m. and 3:30 p.m. - 3:50 p.m. Cost will be **\$20.00**, payable by cash or check (check should be made out to Meridian Park PTSA).

If you pre-ordered a yearbook, your student's yearbook will be delivered to their classroom during the last week of school for distribution by their teacher.

Thank you all for supporting our Meridian Park Elementary yearbook and Meridian Park PTSA!

Rhonda McRae

LOST AND FOUND

The Lost and Found is overflowing! **This will be the last month to claim your items before all clothing is donated to The Works!**



Susan Duthweiler

Meridian Park News

YOUTH NATURALISTS NEWS

Youth Naturalists are collecting plastic caps for recycling! Please bring in your caps and place in the labeled box in the lobby. Caps from milk cartons, food pouches, and cosmetic tubes are being collected, as these items typically do not go in our curbside recycling. You can also deposit caps from your water bottles, soda bottles, and juice bottles, or leave them on your bottles for curbside recycling. The purpose is to teach kids that they can make a difference. Plastic caps are the most abundant form of trash found on beaches and in our oceans. Help support our Youth Naturalists' participation in **"Save the Caps!"**



Callie Steward

ART DOCENT VOLUNTEERS NEEDED

Did you enjoy your students' artwork from the Art Docent program this year? We need more volunteers for the 2016-2017 school year!

Art Docents are parent volunteers who meet four times a year to learn art projects for the kids. The docents then teach or assist with those art projects in your child's class, three times during the school year. It's a super fun way to get involved with art, the school, your child's class, and other parents!

How much you do is up to you! If you want to teach or assist just in your child's class, that's great! Up for multiple classes? Fantastic! The lessons are planned in advance, so you are able to teach them with a PowerPoint presentation in the classroom, then lead the class through the activity. Sound like too much? Assist another volunteer! Hand out paper! There's no such thing as too little help.

Not available during the day for classroom help? Volunteer to set up for evening events! Help with the annual fundraiser! Create fliers! Send emails! You can still help!

For more information or to join us for the next school year, please contact Carrie Yandell and Krista Morrison at mpartdocents@gmail.com. Thank you!

Carrie Yandell

MERIDIAN PARK HEALTH AND WELLNESS COMMITTEE



Are you interested in forming a committee that is focused on creating a culture of health and wellness here at Meridian Park Elementary School? Mr. Alford is interested in putting together a team of teachers, parents, administrators, and students focused on making Meridian Park the healthiest school in the District. Interested? Contact Mr. Alford at matt.alford@shorelineschools.org.

Matt Alford

Cheetah Cheers



A special “thank you” to our staff appreciation team: **Tess Hungerford, Laura Hungerford, and Lori Ramsay**

Thank You

Many thanks and best wishes to **Aissa Quezada** and **Jodi Steele** as they pursue their new adventures!



THE WORKS VOLUNTEERS AND BOXERS & BLOOMERS DRIVE

A very special “thank you” to **Ann Yee** and **Michele Sonntag** for volunteering at Meridian Park’s volunteer night at the Works on April 27. Also, thank you Meridian Park families and all who donated to the Boxers & Bloomers drive. Your donations are greatly appreciated!

MP MARINERS BASEBALL OUTING

MP PTSA Mariners Game took place on May 14. Meridian Park families purchased 144 tickets! Thank you to everyone who bought tickets and helped raise **\$432** for our PTSA! We even had our name on the Jumbotron!



Cheetah Notes

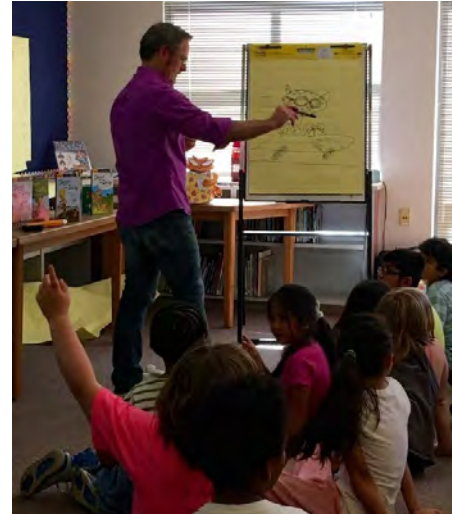
NOTES FROM THE MERIDIAN PARK LIBRARY MEDIA CENTER

Dear MP Families,

We had fantastic literacy assemblies at Meridian Park during the month of May. Author/illustrator **Dana Sullivan** gave five presentations to kindergarten through sixth grade students on May 12. While the younger students learned about the process of writing a picture book, older students learned how to write a simple story with a twist and learned how to create



graphic novels. Dana's presentations were lively and engaging. I would like to thank our PTSA, the Shoreline Public Schools Foundation, and the Shoreline-LFP Arts Council for helping to fund author visits during the 2015-2016 school year.



On Friday, May 27, professional zaniac **Alex Zerbe** visited Meridian Park to kick off King County Library System's Summer Reading Program, "**On Your Mark, Get Set, Read!**" Alex was hilarious as well as inspiring. A big "Thank You" to KCLS for sponsoring Alex's presentation.

Please take advantage of the summer reading program, which begins on June 1, as well as other great literacy programs sponsored by the King County Library System this summer.

<http://www.kcls.org/kids/summer>

THANK YOU!

Thank you for your amazing support of the library throughout the 2015 - 2016 school year. With our book fairs, we were able to raise funds that we used to purchase library books for K-6 students, support our Sasquatch and Young Readers Choice reading programs, and sponsor amazing guest authors Suzanne Williams and Dana Sullivan this year.

END OF YEAR – TURNING IN LIBRARY BOOKS

As of Monday, June 6, students can only have one book at a time on their library accounts.

All library books are due on Tuesday, June 14.

Mike Adams, library technician, will send email notices, as well as hardcopy letters, to families beginning on Wednesday, June 15, if books are still out.

Students who cannot find their overdue library books can choose to either pay for the books (\$10 for a paperback, \$20 for a hardcover) or replace them with like copies. If replacing or paying for lost library books is a financial hardship, please contact me (206-393-4125 or jenny.hillger@shorelineschools.org).

Cheetah Notes

NOTES FROM THE MERIDIAN PARK LIBRARY MEDIA CENTER (CONT'D)

Students who still have library books checked out on the last day of school will not receive their report cards. Report cards will be held in the office. Students can pick up their report cards once they have resolved their library book issues.

SUMMER READING



Look on the Meridian Park homepage for links to the MP library website and lists of great books that students can read throughout the summer.

Have a great summer!

Jenny Hillger

Librarian/Teacher

jenny.hillger@shorelineschools.org

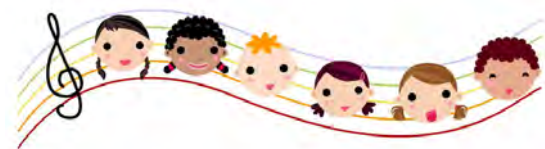
(206) 393-4125

NOTES FROM THE MUSIC DEPARTMENT

Thank you, Meridian Park PTSA and families, for your amazing support of the music program at

Meridian Park! It is such an asset that students can learn music in a beautiful space equipped with so many instruments and quality materials. Giving to your children brings benefits that go on into future generations.

Students, I am proud that you have all learned so much about music this year. Continue learning and listening to, participating in, and just enjoying music all summer! Sing together, play instruments, move to music, draw or color or write a story about music that you hear! Try setting a poem or story to music. Also, take advantage of the many summer music events, concerts, and musicals in the area. There are wonderful opportunities for families and children to enjoy music and the arts, and many of them are free.



Have a fun, safe, musical summer, singing Cheetahs, and I'll see you in music class in the fall!

Shari Anderson

Music Specialist

shari.anderson@shorelineschools.org

NOTES FROM THE MERIDIAN PARK HEALTH OFFICE

MEDICATION REMINDER

If your child has medication in the Health Office, please be aware that medications cannot be stored at school over the summer. **Parents, please stop by the Health Office to pick up your child's medications on or before the last day of school.** The health office will close at 2:30 p.m. on Friday, June 24 (the last day of school). Emergency medications (Epi-pens and inhalers) should be picked up on the last day of school. Non-emergency medications (i.e. Tylenol, Ibuprofen) can be picked up before the last day of school.

Medications will NOT be sent home with students. Policy requires that medications left in the Health Office after June 24 will be destroyed. If you need to make special arrangements to pick up your child's medication, please contact me at tama.leahy@shorelineschools.org or 206-393-4124.

Thank you!

Tama Leahy RN

Meridian Park Elementary

Cheetah Notes

NOTES FROM THE P.E. DEPARTMENT

MY PEOPLE ARE STRONG.

It feels good to say, and I have the data to prove it. Meridian Park Cheetahs have become significantly stronger this year!

Those of you who have been following the my monthly column in the Cheetah Chatter know that we have made a concentrated effort this year on improving muscular strength as indicated by increasing our push-up scores. Student test data from 2014-2015 led me to the conclusion that my students needed vast improvement in muscular strength, and we set out this school year with the focused intention of improving this component of fitness.

Nearly every Physical Education session this school year included a short concentrated muscular strength component. We did burpies, planks, push-ups, bear crawls, and more. In addition, I talked to the students often this year about the importance of intentionally working on upper body muscular strength two to four times a week outside of school. While I did endure a fair amount of groaning at times, the fact is that students at Meridian Park have become significantly stronger over the course of the school year.

Below is a table detailing class averages for completed push-ups over the course of the year. As you can see, **the 4th, 5th, and 6th grade class averages all improved significantly between Fall 2015 and Spring 2016.**

	Fall 2015	Winter 2015-2016	Spring 2016
Class of 2022	4.8	7.0	9.8
Class of 2023	5.4	6.9	9.5
Class of 2024	4.2	5.2	8.3

With any data set that uses average as a measurement of growth, it is important to examine the total percentage of students actually improving to ensure that a minority population of high growth is not driving the average up. With over 80% of my 4th, 5th and 6th grade students improving by at least two push-ups over the course of the school year, I feel safe in saying most of my students grew under my instruction.

This growth in muscular strength represents significant improvement for the 6th, 5th and 4th grade students alike, and I am extremely proud of the progress. I know that many students accepted the responsibility of working on this goal outside of school and the dedication is evident in the results.

Our principal, Mr. Tadlock, likes to say, "We can't do everything, but we can do anything." This very much rings true for me as my limited contact time with students often feels like a barrier to authentic learning and growth in physical fitness. It is clear though, that when we focus on a goal and persevere, we can accomplish great things!

It feels good to say with confidence that **My People Are Strong**, and I am really proud of these students!

PARENT SURVEY

Please take a minute and let me know how I am doing! Follow this link to a short Meridian Park Physical Education Survey. I very much appreciate your time and honest feedback.

<https://docs.google.com/forms/d/1O6T-RMAJEHLoXKyaadBdLLHbE5yyw-t21yrDXb45PA/viewform>

Thanks for a great year and have a wonderful and active summer!

Matt Alford
MP Physical Education Specialist
matt.alford@shorelineschools.org

PTSA President's Letter

HELLO MERIDIAN PARK FAMILIES!

It hard to believe that this is the final Cheetah Chatter of the 2015-2016 school year! **The last PTSA meeting of the year will be on Tuesday, June 7, from 6:30 p.m. - 8:00 p.m.** We will conduct a short business meeting followed by a volunteer appreciation party. We invite all of our amazing volunteers to come by for treats provided by the Meridian Park teachers and a special "thank you" from the PTSA. The Dale Turner YMCA will provide free childcare.

We had a very successful event-filled year and are happy to report that we met some of our yearly goals. **We increased our PTSA membership by 20% (our goal was 10%).** Thank you to the 208 MP families who participated in the membership drive!

We also developed and executed a new fundraising program, **Empower the Cheetah**, which will ultimately take the place of the Annual Shoreline Classic Car Show if the car show is discontinued in 2017. **Thank you to everyone who contributed to the Empower the Cheetah \$5,000 donation total!**

On a personal note, this is my last year as PTSA President and as a MP parent. I am very sad to be leaving the school, but I know that the PTSA is being left in the very capable hands of next year's PTSA President, Callie Steward, and the other members of the Board of Directors.

We still have several positions on the Executive Committee open, including Co-President, Co-Treasurer, and Vice President of Events. Detailed job descriptions can be found at: mpptsa.org/descriptions-of-ptsa-board-positions. If you are interested in joining the leadership team or have questions, please contact me.

We hope to see you all at the **7th Annual Shoreline Classic Car Show on Sunday, July 17**, taking place right here at Meridian Park. For more details, check out: http://mpptsa.org/shoreline_classic_car_show/.

A final **"thank you" to all of the PTSA volunteers** who helped coordinate and run all of the PTSA events. We could not have done it without you!

Have a happy and safe summer!

Jill Steinberg
MP PTSA President 2015-2016
mpptsapresident@gmail.com
(206) 356-5977

PTSA News

NEW CLUB INFO

Would you like to bring a club to Meridian Park? Whether you are a parent volunteering to teach a club or if you would like to bring a club taught by a professional to our community, I can help you get started. It's not too early to think about next year! Examples of clubs run by parents include Chess, Solve the Rubik's Cube and Youth Naturalist. The PTSA also sponsors clubs like ArtWise, Robotics, and drama, which also depend on parent support and volunteers. Please email Mary Webb at mwebbnd@gmail.com for more information about how to get your club started.

Mary Webb

Resources for Families

MERIDIAN PARK ELEMENTARY

schools.shorelineschools.org/meridianpark/

David Tadlock *Principal*
David.Tadlock@shorelineschools.org

Hillery Clark *Early Childhood Program Manager*

Diane Randall *Office Manager*

Jill Gwazdauskas *Registrar*

Tama Leahy *School Nurse*

Annie Gage *Family Advocate*

2015–2016 MP PTSA EXECUTIVE COMMITTEE

www.mpptsa.org

Jill Steinberg *President*
mpptsapresident@gmail.com

Mary Webb *VP Clubs & Programs*
mpptsavpprograms@gmail.com

OPEN *VP Events*
mpptsavpevents@gmail.com

Rhonda McRae *Secretary*
mpptsasecretary@gmail.com

Matt Clark & Joy Rieke *Co-Treasurers*
mpptsatreasurer@gmail.com

STANDING COMMITTEES

Lee Lambert *Grants*

Adrienne Thompson *Legislative*
mpptsalegislativechair@gmail.com

Susan Duthweiler *Membership*
mpptsamemberships@gmail.com

Linda Tsai & Diana Gray *'Cheetah Chatter' Editors*
mpptsanewsletter@gmail.com

Heather Sterling *Webmaster*
mpptsawebsite@gmail.com

Follow the MP PTSA on Facebook



SUMMER LEARNING ACADEMY

Invitations for this year's Summer Learning Academy have been mailed to the homes of students who qualify. This is an invite-only program for students based on District criteria who would benefit from additional practice in reading or mathematics. Space is limited, so be sure to put in your application as soon as possible. Please follow the instructions on the registration forms and forward questions to this year's **Summer Learning Academy Principal, John Simard**, at john.simard@shorelineschools.org.



SCHOLARSHIPS FOR SHORELINE SUMMER PROGRAMS

The **Spartan Recreation Center** provides generous scholarships for qualifying children.

Each qualifying child can receive \$250 in scholarship funds per calendar year for fun and enriching activities. Some of the choices this summer include Sports, Arts, and LEGO.

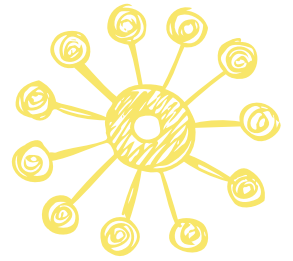
There are three ways to qualify:

- 1) Get a letter from your child's school verifying that your child receives free/reduced lunch
- 2) Show a letter from DSHS verifying services from them this year
- 3) If you have a child in Head Start, all of your children are eligible for the scholarships

For more information, call the **Spartan Recreation Center** at 206-801-2600.



The Cheetah Chatter is published monthly by
 Meridian Park Elementary School and the Meridian Park PTSA
 17077 Meridian Avenue N | Shoreline, WA 98133 | 206-361-4251



SUMMER CLIPPING TIPS

**Keep families clipping all summer long
and get a head start on next year!**



Send home a **NEW collection sheet** (attached) to remind parents to clip and help them keep track of all their Box Tops over the summer months.



Check out our library of NEW shareable images—perfect for promoting your school's Box Tops program on social media year round.
Download them at [BTFE.com/images](https://www.bttf.com/images)



Throughout the summer, reach out to local retailers for prizes for Box Tops contests next year. Popular ideas include gift cards and movie tickets.



Send home a Box Tops participating products list. The updated list fits on one page for easier printing!
Get the list at [BTFE.com/products](https://www.bttf.com/products)



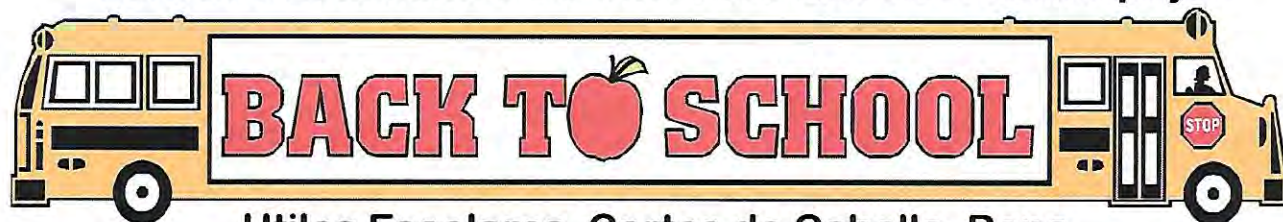
Let parents know what's buzzing with Box Tops during the summer months! Make sure to share the summer edition of the Box Tops Buzz.
Download the Buzz at [BTFE.com/Buzz](https://www.bttf.com/Buzz)



TIME FOR A BOX TOPS PICNIC!

Thank you for helping! Clipped Box Tops are each worth 10¢ for your child's school. Bonus certificates should not be attached to this sheet – please submit them separately. To see more ways to earn cash for your child's school, go to **BTFE.com**. See more collection sheets at **BTFE.com/collectionsheets**.

Para Los Estudiantes De Shoreline Que Necesitan Apoyo



Utiles Escolares, Cortes de Cabello, Ropa

El evento de Regreso a la Escuela (Back to School) provee utiles, cortes de cabello, y asistencia con ropa para las familias de escasos recursos o que tienen dificultades economicas que impiden preparar a sus hijos para regresar a clases en el otoño.

27 de Agosto, 2016

12:30-4PM

Escuela Primaria North City

Muchas formas para registrar para este evento comenzando el 16 de Mayo

- Por el internet www.btsconsortium.org
- Enviar el formulario por correo postal
- Llamar al 206-393-4916 Línea informativa deje un mensaje y alguien le llamará para finalizar su registro
- Comunicarse con la enfermera (nurse) o el representante de bienestar familiar (family advocate) de la escuela.

Fecha límite para registrar es el 19 de Agosto

Members of the Back to School Consortium: Center for Human Services; City of Shoreline; Dale Turner Family YMCA; Hopelink; Ronald United Methodist Church; Shoreline Community Care; Shoreline School District; Turning Point The Works of Shoreline PTA Council

For Shoreline School District Students Needing Support



School Supplies, Hair Cuts, Clothing

The Back to School event provides school supplies, haircuts, and clothing assistance for families who are living with a low income and/or experiencing circumstances in their life that make it challenging to prepare their children for going back to school.

August 27, 2016

12:30-4pm

North City Elementary

Many Ways to Register! Starting May 16th

- Online at **www.btsconsortium.org**
- Mail in Registration Form
- Call 206-393-4916 BTS Info Line
 - Leave a message and someone will return your call to register you
- Contact the school Nurse or Family Advocate

Deadline for Registration is August 19th.

Members of the Back to School Consortium: Center for Human Services; City of Shoreline; Dale Turner Family YMCA; Hopelink; Ronald United Methodist Church; Shoreline Community Care; Shoreline School District; Turning Point; The Works of Shoreline PTA Council