

Cheetah Chatter

Published by Meridian Park School & Meridian Park PTSA

CAMPBELL'S LABELS FOR EDUCATION IS ENDING!

In the past few years, participation in Labels for Education® (LFE) has declined and as a result, Campbell's has decided to wind down the LFE program. The good news is that nothing will change during the current program year; however, there will be changes for next year's program starting August 1, 2016. They will continue to support American kids through their *Grand Stand for Schools* sweepstakes and their community efforts in which they annually contribute \$70 million in food and funding to tackle obesity and hunger amongst our country's most vulnerable families.

Keep sending your labels to school for now! We'll send them in and order supplies for our recess team, art docent, and PTSA. With your help in February, we were able to supply brushes and paints to the art docents and balls, jump ropes, and games to the recess team.

Thank you, parents!

STUDENT COUNCIL SPONSORED SPIRIT DAY: TWIN DAY ON MARCH 25TH

Students can bring their favorite stuffed animal, blanket, or pillow to class. "Twins" can be a small group of friends within or beyond grade level/classrooms. Wouldn't it be fun if buddies dressed alike? Photos will be \$0.25 each and will be taken during recess (more info to come).

LOST AND FOUND

Please check the lost and found – there are a lot of lost sweatshirts and coats! We will be donating lost and found clothing to The Works on **March 11th**, so claim your items now!

SAVE THE DATE! SPRING FAMILY FUN NIGHT AT MERIDIAN PARK!

On Thursday, April 14th, Meridian Park will be the place to be as we hold our first ever **NOODLEPALOOZA** with the Scholastic Book Fair! More details to come!

We are looking for volunteers to help plan this event. Interested? Please contact Jill Steinberg at jsteinberg@comcast.net or Dana Doerksen at gasbarri@comcast.net.

INSIDE THIS ISSUE

Announcements.....	1
Principal's Letter	3
Cheetah Notes	5
PTSA President's Letter	9
PTSA News.....	10
Community News	13

UPCOMING EVENTS

March 4 and 5

7:00 p.m.
Shorewood High School
"Out of the Woods"
Performances

March 6

5:00 p.m. – 8:00 p.m.
Shorewood High School
"The Mask You Live In" movie
event

March 7

No School
Staff Work Day

March 8 – 11

Early Dismissal
Elementary Parent/Teacher
Conferences

March 10

5:30 p.m.
MP PTSA Teacher Appreciation
Dinner

March 10

7:00 p.m. – 8:30 p.m.
Shorewood High School Theater
West Side Choral Festival

March 12

9:00 a.m.
Shoreline Center
Math Olympiad Competition

March 13

Daylight Saving Time Begins

March 14-18

All Schools
Support Staff Appreciation
Week

April 4

No School
Staff Work Day

Announcements

Announcements continued

MERIDIAN PARK PTSA ALONG WITH DANDYLYON DRAMA PRESENTS...



"OUT OF THE WOODS"

A new musical performed by Meridian Park's 4th-6th grade drama club. Performances are Friday, March 4th and Saturday, March 5th starting at 7:00 p.m. at Shorewood High School Performing Arts Theater.

Tickets will be available for purchase at the door.

HOW STUDENT MEAL ACCOUNTS WORK!

Every student is assigned a student ID number and a meal account is created when they register with the Shoreline School District.

The account is similar to a checking account, where purchases are deducted from funds you apply to the account. At the start of the school year, we create a barcode card for each Elementary student to scan at the point of purchase. Students are taught by their teacher to pick up their card just prior to meal service each day. Middle/High School students enter their ID using a pin pad.



PAYMENTS

Funds can be applied to a student meal account in many ways:

- ***PREFERRED METHOD*** Debit or credit cards online at <https://touchbase.shorelineschools.org>
There is no fee for Food Service payments.
- Cash or check to the cafeteria cashier or school office
- Emergency debit or credit card payments by phone at 206-393-4102
- All forms of payment accepted in the Food Services Office located in the back of Hamlin Park at 2003 NE 160th Street

Remaining funds carry-over to the next school year while the student is in the Shoreline School District

ACCOUNT ACTIVITY

The "Food Service" tab on your Family Access page is your source to view purchase activity and see payments that have been applied. Also, there are links to the Food Service webpage and the online payment site.

If you do not have your Family Access login information, contact the office at your student's school

FOOD SERVICE WEBSITE

The Food Service site is a great resource for information. Some of the things you can find on the site are:

- Menus and nutritional information
- Free/reduced meal applications, instructions and frequently asked questions
- Price and payment information
- Links to USDA regulations
- Information about automated "Negative Balance Notifications" and how to set up "Low Balance Notifications"

FOOD SERVICE CONTACT

The Food Service Office is open 7:30 a.m. to 3:30 p.m. on school days, with varying hours on non-student days. Please contact us with any questions at 206-393-4209 or nutrition.services@shorelineschools.org.

Principal's Letter

Dear Cheetahs —

Second semester is well underway and our staff teams continue to work collaboratively on important topics of student learning. Teamwork includes our shared team growth goals, and we also have State/District Smarter Balanced Goals. Thanks to our hard working staff who is making a positive difference each day for our students!

Semester reports were sent home on February 12, so you should have your student's report card. **Parent/teacher conferences begin March 8**; if needed, contact your teacher about your date/time. Our goal is 100% participation, so please let us know how we might accommodate your busy schedule.

The purpose of the March conference is to discuss academic progress. Before the conference, please review your child's semester report card and identify a few talking points. It might also help to review the additional info sent home with report cards. While this is the final scheduled conference for this school year, we are always happy to visit with you individually about your student's progress or other questions as needed.

Communication is also important when there is a problem or concern. Our general guideline is to communicate with staff closest to the situation and resolve at the lowest level possible. It's helpful to communicate quickly/privately, assume the best, and take a positive approach. While I am always happy to help, it's usually faster and easier to work things out directly with your teacher or the staff member directly involved. Thanks as always for our partnership.

In recent years, our state and district have shifted to the national Common Core Standards. Developed by education experts from 45 states, these K-12 learning standards go deeper into key concepts in math and English language arts. You can learn more at <http://www.k12.wa.us/CoreStandards/default.aspx>.



State testing for grades 3-4-5-6 is scheduled for April 26-June 2 at Meridian Park. This is the second year that Washington will use the national Smarter Balanced Assessment for Literacy and Math; Grade 5 will also complete the State Science Assessment.

The specific testing dates for each grade level are as follows:

Grade 3	May 3-4-5, June 1-2
Grade 4	May 10-11-12-13
Grade 5	May 17-18-19, May 26, June 1-2
Grade 6	April 26, May 3 & 5, May 10

As a reminder, on-time attendance is very important on your student's testing dates, so please mark the dates on your calendar and limit out-of-school time. We need students in school during the entire day on the day of the test. Additional info will follow in March and April.

Principal's Letter

Principal's Letter continued

We are beginning to plan for next year! Very soon, we need every family to return an intent form about your plans for next year. We realize most families will return, but we need to be sure since enrollment is key to staffing and class configurations. Our student assignment process begins in April and ends right before school starts. We are very careful about creating balanced classes and making the best classroom assignments for children and grade levels. Please watch for a flyer in your student's take home folder.

Art experiences and education are a valuable part of a child's total education, and we are thankful to our classroom teachers, our specialists, PTSA art docents, and others who provide valuable Art experiences. It's a challenge to find time in the school day for everything we value in providing a well-rounded education, but we're committed to a good balance of academics, the arts, fitness, library/information skills, and other areas. Thanks for our partnership with the academics and arts; and let's all advocate for the Arts!

Congratulations to our Global Reading Challenge Teams! We encourage families to read together daily. March 2 is Dr. Seuss's birthday, and we invite your participation in classroom activities to celebrate reading. Celebrate as a family with a "reading party" and reading at home. *The week of March 2 is a great week to limit screen time and read more instead!*

We are grateful for our wonderfully supportive PTSA. Thank you for sixth grade camp support, classroom grants, family activities, parent education, and more. We could not be the great school we are without our PTSA. And thank you, moms and dads, for our partnership in the education of your children; it's powerful when adults work together on behalf of kids. We hope to see everyone soon at one of our many activities.

~David Tadlock, Principal

david.tadlock@shorelineschools.org

TADLOCK TIP #7 - FAMILY FACE TIME

Life is busy, and I encourage family face time: playing, reading, eating, exercising, and relaxing together. March especially can be a long month for busy families. At my house, things can get crazy, too. Be persistent with family habits for balance and together time. Keep eating together (without electronics), talking to each other, and keep spending uninterrupted face time together. Tell your kids: 'Mr. T says that family face time matters.'

INFORMATION REMINDER

We are committed to regular communication and information, and we rely heavily on email and websites. We encourage you to set your inbox and browser for easy access to information. It's helpful to keep Office Secretary Jill updated about family phone numbers and email addresses.

PTA	www.mpptsa.org
Office	jill.gwazdauskas@shorelineschools.org
District	www.shorelineschools.org
MP	www.shorelineschools.org/meridianpark

Click the links above to find information on our school, teachers, library, principal, and more

Cheetah Notes

NOTES FROM THE MERIDIAN PARK LIBRARY MEDIA CENTER

Greetings MP Families,

In February, we hosted internationally known author Suzanne Williams. Mrs. Williams' best-known books include the *Heroes in Training* and *Goddess Girls* series, as well as the picture book *Library Lil*. Her presentations to kindergarten through sixth graders included information about her writing process, how she co-writes with another author, and interactive participation with the audience. Students enjoyed the assemblies. A big "Thank You" to our **PTSA**, the **Shoreline Public Schools Foundation**, and the **Shoreline/LFP Arts Council** for sponsoring author visits at Meridian Park!



Suzanne Williams, our guest author

2016 READ-A-THON

It's time for students to read, read, read! Our annual PTSA fundraiser began on Monday, February 29th, and will run through Sunday, March 20th. Students can turn in their pledge money beginning on Monday, March 21st. To be eligible for prizes, students must turn in the pledge money by Friday, March 25th.

Funds raised help to support field trips, before- and after-school clubs, the Fall Carnival and much more.

Student prizes include gift certificates to spend at the book fair in April, key chains, t-shirts, a pizza party, and gift cards for a local movie theater.

Read-a-Thon packets went home on Wednesday, February 24th.

SASQUATCH & YOUNG READERS CHOICE

March 25 and April 1 Voting Parties for 4th, 5th and 6th Graders

Intermediate students who have read at least two Sasquatch or two YRC books, taken the Reading Counts quizzes for them, and posted comments and ratings, will be invited to the voting parties on Friday, March 25th or Friday, April 1st. Once a student has met the requirements, s/he must sign up in the library in order to come to the party. Please encourage your intermediate student to participate. It's not too late! Students have been reading the 2015 -16 nominees since last fall.

SCHOLASTIC BOOK FAIR "FEELIN' GROOVY": APRIL 11-15

Our big Scholastic Book Fair will run the week of April 11th – 15th in the library.

Hours will be 8:40 a.m. – 4:00 p.m. Monday – Thursday, and 8:00 a.m. – 1:00 p.m. Friday. The book fair will also be open during Open House/ NoodlePalooza on Thursday, April 14, from 5:30 p.m. – 7:30 p.m. More detailed information will be sent home the week before the fair.



We depend upon volunteers to help our book fairs run smoothly.

If you are able to volunteer for a 1½ to 2 hour shift, please let me know. Email: jenny.hillger@shoreschools.org. Phone: 206-393-4125. Thanks!

~Jenny Hillger
Teacher/Librarian

Cheetah Notes

NOTES FROM THE MUSIC DEPARTMENT

Meridian Park 6th grade students are doing a fantastic job representing our school in the Shoreline School District's Music Festivals. Still to come is the West Side Vocal and Honor Choir Festival. This will be a fantastic evening, all are welcome to come hear these amazing 6th grade and high school choirs!

Important upcoming Music events for Meridian Park:

WEST SIDE CHORAL AND 6TH GRADE HONOR CHOIR FESTIVAL PERFORMANCE

Thursday, March 10

7:00 p.m.

Shorewood High School Theater

MERIDIAN PARK ARTS FESTIVAL

Thursday, May 26

6:30 p.m. - 7:15 p.m.

All 2nd through 5th grade students perform in a vocal/choral music concert.

6TH GRADE MOVING ON PROGRAM

Thursday, June 23

9:30 a.m. - 11:00 a.m.

All 6th graders to perform



~From Mrs. Anderson and the Meridian Park Singing Cheetahs

NOTES FROM ANNIE GAGE

FAMILIES, FRIENDSHIPS, FEELINGS, FUN

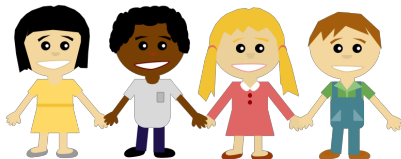
It can be hard to understand the difference between bullying, being mean, and being rude or clumsy. I saw this online and think it clarifies the difference very clearly.

IS IT BULLYING?

When someone says or does something
unintentionally hurtful,
and they do it once,
that's **RUDE**

When someone says or does something
intentionally hurtful,
and they do it once,
that's **MEAN**

When someone says or does something
intentionally hurtful,
and they keep doing it
even when you tell them to stop
or show them that you're upset,
that's **BULLYING**



~Annie Gage, MSW
Family Advocate

Monday-Friday, 8:00 a.m. - 4:30 p.m.

206-393-1768, annie.gage@shorelineschools.org

Cheetah Notes

NOTES FROM P.E.

CHEETAHS ARE GETTING STRONGER!!!!

As part of our ongoing effort to improve muscular strength at Meridian Park, I am very happy to report that Cheetahs ARE Getting Stronger!!! The numbers don't lie, ladies and gentlemen; with a concentrated effort Cheetahs are improving their upper body muscular strength! We re-administered the push-up test in January to measure our growth on this goal and I am very pleased to report significant progress in all grade levels.

The sixth grade (Class of 2022) made the most significant growth moving from a class average of 4.8 push-ups per student to 7.0 push-ups per student!

The fifth grade (Class of 2023) also showed substantial progress growing from an average 5.4 push-ups per student to 6.9!

Not far behind are the fourth graders (Class of 2024) moving from an average of 4.2 push-ups per student to 5.2!

I am very happy and proud of how much we have grown in muscular strength so far this year, but a closer look at the data reveals that we still have some work to do. While our class averages have grown significantly, this does not mean that every student has improved their push-up scores. In fact, only 135 of the 265, or 51% of students tested actually improved. That's right, just over half of the 4th-6th grade students increased their muscular strength as demonstrated by increased push-ups. The data is desegregated by grade band below.

CLASS	# OF STUDENTS TESTED	# OF STUDENTS IMPROVING	% OF STUDENTS IMPROVING
Class of 2022 (6 th Grade)	95	54	56.8
Class of 2023 (5 th Grade)	78	41	52.5
Class of 2024 (4 th Grade)	92	40	43.5
Totals	265	135	50.9



Cheetah Notes

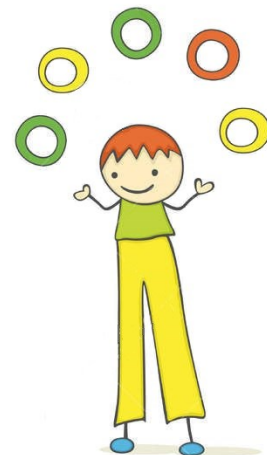
Notes from P.E. continued

While I am happy that we are moving in the right direction, I have high expectations for all of my students and we will continue to focus on improving our muscular strength throughout the winter and into the spring. There is little we cannot accomplish if we set our intention and practice with persistence.

Completely anecdotal at this point, but as I was testing the students in their push-ups last month, I had questioned them as if they were practicing muscular strength exercises at home. Overwhelmingly the students who reported working specifically on push-ups and related exercises out of Physical Education class showed significant improvement on their push-up scores. This said, I really encourage you to check in with your kids about working on muscular strength 3-5 times a weeks out of class. I am absolutely convinced that spending just 3 minutes a day on exercises to support muscular strength will have a beneficial result on fitness scores!

PERFORMANCE ARTS

Performance Arts Club (formerly Circus Arts) begins on March 8th and continues every Tuesday and Thursday morning from 8:15 a.m. to 9:00 a.m. Performance Arts focuses on skill building in jump rope, juggling, diabolo (Chinese Yoyo), unicycles, dance, pogo sticks, stilts and more. Club culminates with a performance at the Meridian Park Spring Open House/Family Fun Night on April 14th. Performance Arts is open to 4th-6th grade students. Permission slips are available in the main office.



HELMET DRIVE

Have a bicycle helmet lying around the house that you no longer use? I am collecting helmets in preparation for teaching unicycles, and would really appreciate any donations from Meridian Park families. Simply send the helmet to school with your child and have them bring it to PE. Thank you for your support!

~Matt Alford
Physical Education Specialist
matt.alford@shorelineschools.org

PTSA President's Letter

Hello from the Meridian Park PTSA!

Thank you in advance to all of the volunteers who will be assisting with the MP Drama Club production of "Out of The Woods" on Friday, March 4th and Saturday, March 5th at 7:00 p.m. at Shorewood High School Auditorium. Tickets are on sale and can be purchased using the order form located at mpptsa.org under "Contact Us" and then "Forms." A hard copy of the order form went home in kid mail before mid-winter break. Tickets will also be available to purchase at the door pending availability. We hope to see you there supporting MP students!

The Nominating Committee is currently recruiting candidates to run for office in 2016-2017. Open positions include Co-Presidents, Co-Treasurer, and Co-Vice Presidents of Events. If you are interested in joining the leadership team or have questions, please contact Nominating Committee Chair Linda Tsai at neonfish@comcast.net.

Be sure that you have the 7th Annual Shoreline Classic Car Show marked on your calendar for Sunday, July 17th! The Car Show is the only Seafair sanctioned event in Shoreline and is held at Meridian Park Elementary. It is the MP PTSA's largest fundraiser for the year and this may be the very last car show as our amazing car show planners, Marty and Holly DeGrazia are moving on to Einstein next year! This event is a great community gathering that attracts hundreds of classic cars and spectators. Your help is needed to make the show successful and continue this wonderful tradition. Stay tuned for information on a planning meeting.

The next PTSA General Membership meeting will be Tuesday, April 5th from 7:00 p.m. - 8:30 p.m. in the Library. The business agenda will include the election of officers and we will host pediatrician Dr. Giselle Falkenberg who will talk about topics related to elementary age kids. She will also happily answer all of our questions on topics such as adolescence, sleep, and hormones. The Board of Directors will meet beforehand at 6:00 p.m. The regular monthly Board of Directors meetings are held on the first Tuesday of the month. YMCA provides free childcare and all of our meetings are open to the public. We hope to see you there!

~Jill Steinberg
MP PTSA President 2015-2016
mpptsapresident@gmail.com
206-356-5977

PTSA News

THE WORKS – VOLUNTEERS NEEDED

The WORKS clothing room provides high quality, clean, gently used children's and teen clothing to Shoreline School District families experiencing circumstances that make it challenging to clothe their children for school.



The WORKS is run by a committee of PTA volunteers representing many different schools throughout the Shoreline School District. They are supported each Wednesday by volunteers from local PTA units. Each local unit signs up to assist 2 Wednesdays during the school year.

Please consider representing Meridian Park as we need 2-4 volunteers to help on April 27th from 6:30 p.m. - 8:30 p.m.

If you would like to volunteer, please contact Susan Duthweiler at sduthweiler@gmail.com or 206-542-5147.

STAFF APPRECIATION DINNER - VOLUNTEERS WANTED!

On Thursday, March 10th, kindergarten and 1st grade families will be sponsoring an Italian-themed dinner for teachers and staff who are working late to accommodate parent-teacher conferences. Families from any grade are welcome to participate by signing up for an item to bring on the event's "Perfect Potluck" website: <http://www.perfectpotluck.com/meals.php?t=KCWV6236>. Please mark your item "Staff Appreciation" and drop it off in the staff lounge (use staff refrigerator if needed) on Thursday, March 10th any time before 5:30 p.m., or you can send in your item with your child to drop off in the office. We will be serving dinner at 5:30 p.m.

Thank you for making this a wonderful event!

~From the Staff Appreciation Committee



PTSA News (Nominating Committee)

THE MERIDIAN PARK ELEMENTARY PTSA NEEDS YOU!

For the 2016-2017 school year, the Meridian Park PTSA is looking for nominees to fill Executive Board positions. Did you know that the number one reason that people cite for not volunteering is that "Nobody asked?" The second reason is most likely, "I don't have the time." Well, we are asking YOU and we understand your time constraints. We have really small jobs, big jobs, and many in between!

Our students and community benefit from PTSA, and from the efforts of involved and informed parent volunteers. These parents work hard to understand the challenges facing education today, and to become part of the solution. The PTSA helps our students to succeed in their learning by focusing on areas such as school safety, nutrition, academic enrichment, health, and general well-being. You can make a difference by joining a PTSA committee, helping with an event, or working in a leadership role.

The open Executive Board positions for 2016-17 are described below:

Co-President(s): The co-presidents are the leaders of the PTSA in our school and work closely with the school principal. They run monthly PTSA meetings, coordinate and administrate the Executive Board and the volunteers who oversee all PTSA committees. They advocate for the school in a number of different environments. These nominees should be skilled at delegating responsibility by empowering others, creating excitement, and cultivating a positive rapport with the entire school community. Please contact Jill Steinberg at mpptsapresident@gmail.com if you have questions or need additional info about this role.

Co-Vice-President of Events: The Co-VPs of Events are the coordinators for the PTSA-sponsored school/community events. Do you love event planning? If you do, this job is for you! This VP assists the specific event leaders with the coordination of several school events during the year. These events include: Back-To-School BBQ, Staff Luncheon, Fall Festival, Variety Show, Spring Family Fun Night, Spring Arts Festival, Skating Parties, and the Shoreline Classic Car Show. If you have questions or need additional info, please contact Jill Steinberg at mpptsapresident@gmail.com.

Co-Treasurer: Are you the one who handles the books at home? Do you complete your own taxes in a flash? We are looking for a co-treasurer to work alongside Joy Rieke in the MP PTSA finances department! The treasurers are responsible for overseeing the management of the MP PTSA funds and for providing financial information to support the Board's decision-making. We have historically split this role between two people, with one taking on the daily deposits and payments, and the other with maintaining records in the finance software, delivering reports, creating and maintaining the budget. At least one treasurer should attend the monthly PTSA meeting. Please contact Matt Clark or Joy Rieke at mpptsatreasurer@gmail.com with questions.

PTSA News (Nominating Committee)

PTSA News (Nominating Committee) continued

THE NOMINATION PROCESS

Are you a good fit for one of these positions? We would be thrilled to have you join the Executive Board! If someone you know has expressed interest or if you know that he/she would be perfect for one of these opportunities, please ask if he/she would like to be nominated, and then complete the form below. We will vote on the nominees during the April MP PTSA meeting on **Tuesday, April 5, 2016**.

Please join us! If you have questions about nominations, contact Linda Tsai at neonfish@comcast.net.

Thank you,
Linda Tsai, Naomi Hillyard, and Dana Doerksen
MP PTSA Nominating Committee

RECOMMENDATION FOR NOMINATION FOR THE MERIDIAN PARK PTSA OFFICERS

At the April 5, 2016 general membership meeting, Meridian Park will be electing officers for the following positions: Co-President(s), Co-VPs of Events, and Co-Treasurer for the 2016-2017 school year. To be eligible for election to any of the above positions, candidates must have been a member of any PTA in the State of Washington for at least 15 days prior to being elected.

PLEASE PRINT

Recommendation for the office of _____

Name: _____ Phone: _____

Email: _____

Address: _____

Qualifications and experience for this office (e.g. PTA or community service experience/other activities):

Submitted by: (Name) _____ Email/phone: _____

Individuals are welcome to recommend themselves.

Return this form to your child's teacher or to Jill G. at the office by Monday, March 14, 2016.

Community News

Information on these resources is offered as a service to families—these are not always MP or MP PTSA events or workshops.

MERIDIAN PARK ELEMENTARY

schools.shorelineschools.org/meridianpark/

David Tadlock Principal

David.Tadlock@shorelineschools.org

Hillery Clark Early Childhood Program Manager

Diane Randall Office Manager

Jill Gwazdauskas Registrar

Susan Goldman School Nurse

Annie Gage Family Advocate

2015–2016 MP PTSA EXECUTIVE COMMITTEE

www.mpptsa.org

Jill Steinberg President

mpptsapresident@gmail.com

Mary Webb VP Clubs & Programs

mpptsavpprograms@gmail.com

OPEN VP Events

mpptsavpevents@gmail.com

Rhonda McRae Secretary

mpptsasecretary@gmail.com

Matt Clark & Joy Rieke Co-Treasurers

mpptsatreasurer@gmail.com

STANDING COMMITTEES

Lee Lambert Grants

Adrienne Thompson Legislative

mpptsalegislativechair@gmail.com

Susan Duthweiler Membership

mpptsamemberships@gmail.com

Linda Tsai & Diana Gray Cheetah Chatter Editors

mpptsanewsletter@gmail.com

Heather Sterling Webmaster

mpptsawebsite@gmail.com

Follow the MP PTSA on Facebook

facebook

COMMUNITY MOVIE NIGHT - MARCH 6

Two Meridian Park moms, with the support of the Shorewood and Shorecrest PTSA's, have organized a community showing of a documentary about raising boys. The film entitled, "**The Mask You Live In**," dives into the societal pressures that boys (in some cases, as young as elementary school age) are processing. Come and learn about the risks associated with these pressures and engage in a conversation about how Shoreline can raise happier boys. The film will be shown on Sunday, March 6, at 5:00 p.m. at the Shoreline Auditorium (Shoreline Center, 18560 1st Ave N.E.), with a panel discussion to follow from 7:00 p.m. - 8:00 p.m. The movie is appropriate for children ages 14 years and older. High school students will be admitted free at the door with ID. Adult admission is \$7, but is free if childcare is purchased by March 3. (The YMCA will provide childcare services on site, with the first child at \$15, and each additional child at \$10).

Support this community outreach and education. Purchase your tickets today at:

<http://themaskyoulivein.bpt.me>

LGBTQ & ALLIES FAMILY POTLUCK DINNER

Thursday, April 7 5:30 p.m. - 7:30 p.m.
Shoreline Center (18560 1st Ave NE)

Please join members of your Shoreline Schools community in support of LGBTQ families as we share a meal and fun activities for all ages!

Those attending are asked to bring a potluck dish to share. Please RSVP online at:

<https://lgbtqfamilypotluckshoreline.eventbrite.com>

We look forward to seeing you! Please contact Kim Darcy at 206-393-4217 or kim.darcy@shorelineschools.org for more information and questions.

The Cheetah Chatter is published monthly by
Meridian Park Elementary School and the Meridian Park PTSA
17077 Meridian Avenue N | Shoreline, WA 98133 | 206-361-4251

SHORELINE COMMUNITY M O V I E

Presented by: Shorewood PTSA

**Food
Trucks
at 4pm!!!**

Sunday, March 6, 5pm - Shoreline Auditorium - 18560

1st Ave NE

Followed by a Panel Discussion 7pm-8pm

Be Cool... **Be a Man!** **STOP CRYING!**

**From the team of Miss Representation, comes
a film exploring Masculinity in America!**

The Mask You Live In follows boys and young men as they struggle to be true to themselves. Pressured by their peers, adults and the media, boys learn to disconnect from emotions, devalue friendships, objectify women and resolve conflict through violence. Gender stereotypes interconnect with race, class and circumstance to create a maze of identity issues boys must face in order to become "real" men.

Throughout the film, experts in neuroscience, psychology, sociology, sports, education and media weigh in on the "boy crisis" and tactics to combat it. *The Mask You Live In* illustrates how we, as a society, can raise a healthier generation of boys and young men.

VIEW THE TRAILER:

<http://therepresentationproject.org/films/the-mask-you-live-in/>

THE MASK YOU LIVE IN

- ◆ Film is appropriate for audience ages 14 and up
- ◆ Adults \$7 or free with purchased childcare
- ◆ On-site child care, 4:45 pm - 8pm, 2-12 years of age \$15 first child, \$10 subsequent
- ◆ Child care provided by YMCA with movie and crafts including pizza dinner
- ◆ All high school students FREE at the door with school ID from Shoreline or other districts

Brown Paper Tickets: <http://themaskyoulivein.brownpapertickets.com>

About The Representation Project: Using film as a catalyst for cultural transformation, The Representation Project inspires individuals and communities to challenge and overcome limiting gender stereotypes so that everyone, regardless of gender, race, class, age, sexual orientation or circumstance can fulfill their potential.



Sponsored by:

<http://www.shorewoodptsa.com>

<http://www.wfalliance.org>



2016

LGBTQ & Allies Family Potluck Dinner



Thursday, April 7
5:30-7:30 p.m.
Shoreline Center
(18560 1st Ave. NE)

Food! **Fun!**
Activities!

Please join members of your Shoreline Schools community in support of LGBTQ families as we share a meal and fun activities for all ages!

Those attending are asked to bring a potluck dish to share. Please RSVP online at: <https://lgbtqfamilypotluckshoreline.eventbrite.com>

We look forward to seeing you! Please contact Kim Darcy at 206-393-4217 or kim.darcy@shorelineschools.org for more information and questions.

shorelineschools.org



SHORELINE

PUBLIC SCHOOLS

