

# Cheetah Chatter

Published by Meridian Park School & Meridian Park PTSA

## VARIETY SHOW PARENT INFORMATION MEETING

Please come to the Variety Show (former known as the Talent Show) Parent Information meeting, Tuesday, Nov. 4th at 6 pm in the Library. Learn about audition dates, rehearsal, and the show, expectations for auditions, how acts will be notified, and more!

## SCHOOL PICTURE RETAKES NOVEMBER 4

Dorian Photography will be in to photograph students who were absent, are new to the school since picture day, or would like a retake. For retakes, please return your photo package with your student on November 4th and they will print the same package with the new photo. **PLEASE KEEP YOUR CLASS PHOTO AT HOME -- THIS PHOTO WILL NOT BE REPRINTED.** For new orders, forms are available in the MP lobby.

## PTSA'S FALL FESTIVAL

Please join us for this free PTSA-sponsored event that will add a little taste of culture to the arrival of fall at Meridian Park on Thursday, November 6 from 5:30 - 8:00 pm. Look for more information in the PTSA News section of this month's Cheetah Chatter.

## SKATING PARTY

Thursday, November 13 from 6:00 - 8:00 pm. Join us for a skating party at Lynnwood Bowl & Skate, 6210 200th St. SW, Lynnwood. Admission is \$6.50 which includes quad skate rental. Pay an additional \$3.00 for inline skates. Parents are encouraged to participate. No drop-offs allowed. Feel free to bring your helmet! Hope to see you there!

## YEARBOOKS

Yearbook club will be held on Fridays from 3:30-5:00 pm starting November 14 and ending April 17, 2015. Yearbook club is open to 4th, 5th, and 6th graders

Registration information went home with students on October 29th and is due no later than 3:30 pm on Friday, November 7th. Those who are selected for the club will be notified by e-mail on the evening of Monday, November 10<sup>th</sup>.

## STUDENT COUNCIL

The Meridian Park Student Store opens Tuesday, November 25th, after school from 3:40 - 4:00 pm in the entryway of the school. We are selling school supplies, t-shirts and water bottles.

The Student Council will be selling popcorn on Fridays! More information will come out soon.

### INSIDE THIS ISSUE

Announcements .....	1
Principal's Letter .....	2
Meridian Park News .....	3
Cheetah Notes .....	6
PTSA President's Letter .....	7
PTSA News.....	8
Resources for Families .....	10

### UPCOMING EVENTS

#### November 4

6:30 - 8:30 pm  
MP Library  
PTSA Board of Director's Meeting

#### November 4

Picture Retake Day

#### November 4

6:00 - 6:30 pm  
MP Library  
Variety Show Parent Info. Meeting

#### November 4

7:00 - 8:00 pm  
MP Gymnasium  
5th Grade Band Clinic

#### November 6

5:30 - 8:00 pm  
Meridian Park Gym & Cafeteria  
Fall Festival

#### November 6

6:30 pm  
Alumni Room at Shoreline Center  
Shoreline Special Needs PTA

#### November 7

2:30 - 3:00 pm  
Meridian Park Cafeteria  
Veteran's Day Assembly

#### November 11

No School - Veteran's Day

#### November 12

7:00 pm  
Shoreline Room - Shoreline Center  
Common Core Information Night

#### November 13

6:00-8:00 pm  
Lynnwood Bowl & Skate  
Skate Party

#### November 21

Theme to be announced  
Student Council Spirit Day

#### November 26

11:45 am - Early Release Day

#### November 27 - 28

No School - Thanksgiving

#### December 1

No School - Teacher Work Day

# Principal's Letter

Dear Families,

It feels and looks like fall. Your students are doing great work, and I appreciate the thoughtful work of our staff to help each student learn and grow. Students will finish up work for this trimester ending November 26, and progress reports will be sent home on December 15.

Thank you for attending October Parent/Teacher Conferences. Regular communication is a priority, not just at conferences. Feel free to contact your child's teacher at any time. When there's a question, please contact the staff member closest to the situation, and our general guideline is to return your calls or emails within 48 hours. We value regular and proactive communication. Parent/Teacher conferences are scheduled again for January 20 - 23, 2015.

Our calendar also includes non-student days for the purpose of professional development. Our topics this year include the state/national standardized assessment, new progress reports, ELL co-teaching model, use of data to guide instruction, school goals and more. We are committed to the best use of non-student time to grow as educators and improve our program. The next non-student day is December 1 for teachers to work on assessment data and progress reports.

We expect all students to be Respectful, Responsible, and Safe. We appreciate your support and reinforcement of our consistent approach to our self-manager system involving positive behavior choices and discipline. We use the district progressive discipline policy regarding negative behaviors, and our approach is to emphasize prevention, positive interactions, and problem solving.



We also have a zero tolerance policy regarding bullying behaviors. As a school, we are focused on preventing bullying and teaching students how to handle hurtful situations by Recognizing, Refusing, and Reporting. We review this info regularly in classrooms and recently at a school assembly. Each staff member is committed to personal and emotional safety for our entire community.

Annie Gage, our Family Advocate, provides a wide range of family and student support services, including teaming with teachers to provide lessons about respectful, responsible, and safe behavior. Annie also supports families with resources as needed and with our Roots of Empathy program.

Our Safety Committee meets regularly to review our safety procedures, and we recently completed Lockout and Lockdown Drills. We also hold Fire and Earthquake drills to practice for the possibilities of other situations. While we hope never to need our procedures, we want to be prepared. Please review your family's plans for earthquake or weather related late start, closure, or unexpected early dismissal.

If there is an unplanned early dismissal, it will be announced by the district using all electronic and media sources.

Enjoy the season. Thanks to our wonderful PTSA for Reflections and for our Fall Family Night, providing a very fun and safe community activity. I invite you to have lunch with your child(ren) at any time – it's a lot of fun. Thank you for sharing your children and family. We are a great school community because of all of us working together.

~David Tadlock, Principal  
[david.tadlock@shorelineschools.org](mailto:david.tadlock@shorelineschools.org)

## VOLUNTEER HELP NEEDED

Do you have experience directing traffic? Would you consider volunteering your time directing traffic into and out of Meridian Park Elementary in the morning when school begins and afternoon when school lets out? If so, please contact Jill Steinberg at [jrsteinberg@comcast.net](mailto:jrsteinberg@comcast.net)

Shoreline School District #412 does not discriminate against any protected classes. For further information on notice of non-discrimination, including the address and phone number of the Title IX officer, visit: [www.shorelineschools.org/info/title\\_ix.php](http://www.shorelineschools.org/info/title_ix.php).

---

# Meridian Park News

---

## HOLIDAY BASKETS: FOOD, TOYS & TEEN GIFTS DRIVE, DECEMBER 1-12

Holiday Baskets provides holiday food and gift support to Shoreline School District families in need. This year's basket distribution is Saturday, December 13, from 11:30 am - 4:30 pm at Kellogg Middle School. For families needing assistance, register between October 13 and December 1<sup>st</sup>. Ways to register:

- \* **NEW Preferred method!** Register online at [www.eventbrite.com](http://www.eventbrite.com). In the "Search for events" field, enter "Holiday Baskets."
- \* Call **206-393-4916** (Shoreline PTA Council line). Leave a message and we will return your call to register you.
- \* Fill out a registration form and give it to your school Nurse or Family Advocate. Forms are available in their offices and at [www.shorelinepta.org](http://www.shorelinepta.org) under **Family Services**. You can also mail the form to Shoreline PTA Council, P.O. Box 55832, Shoreline, WA 98155-5784.

Ways you can help:

- \* Sign up to volunteer at <http://vols.pt/68T3eR>, or email Lori Woodfield at [LWood9413@aol.com](mailto:LWood9413@aol.com).
- \* Make a donation to the Shoreline PTA Council. Note "Holiday Baskets – Food or Teen Gifts" and mail to Shoreline PTA Council 6.12, P.O. Box 55832, Shoreline, WA 98155. You can also donate using PayPal at [www.shorelinepta.org](http://www.shorelinepta.org), under Family Services. Donations are tax deductible.
- \* Attend the Holiday Baskets Benefit Dinner at Shorecrest HS on November 19 from 6-8 pm. An entertaining evening of singing, dancing, and instrumental student performances and a gourmet meal provided by the culinary arts class is a great way to kick off the holiday season. Tickets are available from Ms. Denney at the ASB Window, Shorecrest HS or by mail – fill out an order form (available on the Shoreline PTA Council web page, under Family Services) and mail to Holiday Benefit Dinner, c/o Shorecrest HS 15343 – 25<sup>th</sup> AVE NE, Shoreline, WA 98155. Purchase tickets by November 12.

## MERIDIAN PARK POSITIVE BEHAVIOR COMMITTEE

MP's Positive Behavior Committee is looking for two or three parents to supervise our monthly Very Important Cheetah (VIC) lunches. The lunches are from 11:15 - 1:30 on the following dates: October 30th, November 20th, December 18th, January 29th, February 26th, March 26th, April 30th, May 28th, and June 11th. Volunteers' duties include setting up the tables on the stage in the cafeteria for the VICs, making sure VICs get to the tables, get their drinks, and take their photo. That's it! If you are interested in helping with one or more of these lunches, please contact Jenny Hillger at [jenny.hillger@shorelineschools.org](mailto:jenny.hillger@shorelineschools.org) or Megan Jones at [megan.jones@shorelineschools.org](mailto:megan.jones@shorelineschools.org).

## BE A CHEETAH CHAMP!

Sign up for a Cheetah CHAMP day! Come into school and hand out Cheetah Cheers, eat lunch with your student, help out in your student's classroom, get your own library card and pick up a book for your student! More information and sign up is available at <http://mpptsa.org/volunteer/>.

## LOST AND FOUND

Please check lost and found -- There are a lot of lost sweatshirts and coats! We will be donating lost and found items to The Works on **November 7** so please make sure to check before then!

# Meridian Park News



## Shoreline School District is Hiring Substitutes!

Shoreline is hiring for both Certificated Substitute positions (teaching degree required) and Classified Substitute positions (no degree required). Classified substitute positions include playground/lunchroom monitoring, crosswalk, paraeducator (classroom help) and more!

Substituting can be a very flexible part-time job, or full-time profession. The job offers many benefits, such as:

- Flexible work hours
- Certificated substitute pay rate: \$135-\$145/full-day  
Classified substitute pay rate: \$9.32-\$13.85/hr
- Influential to students
- Great practice for future teachers
- You choose age group of students to teach
- There are many chances to express your creativity and, most importantly...
- Substitute teaching can be fun!

Applicants with an interest in having a positive impact in Shoreline classrooms are encouraged to apply. For additional information and to access the online application, go to: <http://schools.shorelineschools.org/hr/substitute-information/>

**Spirit Day  
Nov. 21st!  
Theme to  
be  
announced**



---

## Meridian Park News

---

### SHORELINE SCHOOL DISTRICT COMMON CORE INFORMATION NIGHT

Wednesday, Nov. 12, 7 p.m.  
Shoreline Room, Shoreline Center  
18560 1st Ave. N.E., Shoreline, WA 98155

Please join us for an informative and interactive evening of learning about the Common Core State Standards and Smarter Balanced Assessment.

#### Presenters will include

- Teri Poff, Director of Teaching and Learning for Shoreline Schools
- Michael Power, Director of Assessment and Student Learning
- District Instructional Specialists in elementary and secondary English Language Arts and Math

The Common Core State Standards, or "Common Core," are academic learning goals for grades K-12 in math and English language arts. The Common Core replaces Washington's learning standards in math, reading, communication and writing. Common Core was conceived by educators and representatives from individual states to identify and develop college- and career-readiness standards for grades K-12.



In Washington, we will replace some of our state tests with new exams aligned to the Common Core in math and English language arts. The new exams are a part of a comprehensive system called "Smarter Balanced."



Co-sponsored by the Shoreline School District,  
Shoreline Education Association and Shoreline PTA Council

---

# Cheetah Notes

---

## A NOTE FROM THE LIBRARY

Greetings Students and Families,

It has been a very busy autumn in the library. Our first Scholastic book fair was a great success, thanks to all of your support. I'd like to send an enormous "Thank You" to all of the volunteers who helped with set-up, managed the cash registers and kept the displays neat and tidy. I could not have done it without you.

I will use the fall book fair proceeds to purchase a great deal of nonfiction to replace outdated materials, and popular series and picture books to support teachers and students in the classroom.

During the spring and summer months I have removed books from the crowded library shelves for a variety of reasons. The reasons include: the book is in poor condition, the book no longer supports classroom curriculum or student interests, the content is outdated, and/or there is more than one copy of the book. These books will be on tables in the front lobby during the week of November 24th – 26th. Please stop by and take any books that you would like to have for your family.

Happy Reading!  
~Jenny Hillger, Teacher~Librarian

## A NOTE FROM THE BAND DEPARTMENT

Meridian Park and Cascade K8 5th grade band students and parents are invited to a 5th Grade Band Clinic to be held in the Meridian Park gymnasium from 7:00 - 8:00 pm.

## A NOTE FROM THE HEALTH OFFICE

**THANK YOU** to all the families who have been diligently washing and returning borrowed clothing!

**COLD AND FLU SEASON** reminders:

- \* Wash hands often
- \* Cough and sneeze into your elbow
- \* **PLEASE** keep sick students home
- \* Students with fevers or vomiting should remain home for 24 hours **AFTER** the last episode of vomiting or after fever is gone **WITHOUT** fever-reducing medication

**VOLUNTEERS NEEDED:** Vision and Hearing Screenings will take place on November 18th, 20th and 25th from 9:30-3:00 pm. We need LOTS of volunteers to help. The more help we have, the faster we can finish. Note that 4th and 6th graders are not screened. Please contact me by phone or email if you can volunteer for any amount of time on any of the screening days.

Thank you,  
~Susan Goldman R.N., School Nurse

---

## PTSA President's Letter

---

Hello Meridian Park families!

Thank you to everyone who attended the first General Membership meeting of the year on Tuesday, October 7<sup>th</sup>. A huge thank you to Ellen Kaje from Shoreline Schools who was our guest speaker. Ellen spoke about Adequate Yearly Progress under the No Child Left Behind Act and the "Failing Schools" letter. We are excited to announce that Jennifer Scott was elected as our much-needed VP of Programs! The membership also adopted the 2014-2015 budget and standing rules, as well as the following strategic planning goals.

**Goal #1:** Establish a robust parent volunteer database with at least 50 names of volunteers for events and projects.

**Goal #2:** Increase membership by 20% (27 members) by year-end to match the Shoreline PTA Council's goal of increasing membership across the Council by 20%.

**Goal #3:** Increase PTSA sponsorship awareness of events and programs by setting up a PTSA bulletin board in the hallway, having a membership table at each event and by creating "Ask Me About the PTSA" name badges/buttons.

**Goal #4:** Increase outreach to cultural communities and less-represented school groups, such as Early Childhood Education families by sending a PTSA representative to at least three community events, such as the ELL Family Night, the Meridian Park Neighborhood Association, etc.

**Goal #5:** Create job descriptions for PTSA officers and standing committee chairs by March of 2015.

At the recent Legislative Assembly, a variety of legislative issues were adopted as the 2014-2015 platform for the Washington PTA. You can provide your feedback on legislative priorities by filing out the Legislative Issues survey each September. Learn more here:

<http://www.shorelinepta.org/wspta-platform-2014-15.html> and  
<http://www.wastatepta.org/advocacy/index.html>

Do you have questions about Common Core or the new Smarter Balanced testing? Come to an information night on Wednesday, November 12 from 7-8:30 pm at Shoreline Center.

<http://www.shorelinepta.org/common-core.html>

A reminder that our regular monthly Board of Directors meetings are held on the first Tuesday of the month from 7:00 - 8:30 pm (with exception of November's meeting) in the Library. YMCA provides free childcare and all of our meetings are open to the public.



~Kim Ostitis  
~ Jill Steinberg  
Co-Presidents, 2014-2015  
[mpptsapresident@gmail.com](mailto:mpptsapresident@gmail.com)  
206-229-7948

---

# PTSA News

---

## PTSA FUNDRAISER

Thank you to everyone who over the last few weeks has sent in your Fall Fundraiser orders and PTSA donations. Without these raised funds, it would be very difficult for the PTSA to provide fall and spring teacher grants, sponsor the back to school BBQ, and put on the fall festival. Speaking of the fall festival, any student who sold four or more items during the fundraiser needs to attend the fall festival to receive their free Kona Ice prize!

Please remember – place any order throughout the year and Meridian Park PTSA will continue to receive 40% of all sales. Gifts? Wrap? Holiday cards or calendars? Visit [www.gaschoolstore.com](http://www.gaschoolstore.com) and enter our school code #968404. Thanks for all your support!

## PTSA'S FALL FESTIVAL

Please join us for this free PTSA-sponsored event that will add a little taste of culture to the arrival of fall at Meridian Park on Thursday, November 6 from 5:30 - 8:00 pm.



Come in costume or traditional cultural dress while you visit "Meridian Park Around The World" in the gym. MP volunteer families will host tables showcasing their culture, heritage, or place of origin. Stop by each table and complete a craft or just get your passport stamped. Take a travel break and play some carnival games and guess how many candy corns are in the jar! Entertainment in the cafeteria will include dancers and music from around the world. The 6th grade will be selling pizza (\$2.00/slice) to raise money for their trip to camp. Bring a pie for the Potluck Pie Social! Raffle tickets will be sold for \$1.00. Proceeds from the raffle will help cover costs for this event. If you would like to host a table for MP Around the World or volunteer for the event, please contact Jill Steinberg at [jrsteinberg@comcast.net](mailto:jrsteinberg@comcast.net) or (206) 356-5977. Hope to see you there!

## ART DOCENTS BRING CHIHULY PROJECT TO CLASSROOMS

In October and November the volunteer Art Docents, supported by the PTSA, are bringing a lesson and a project based on the work of famous glass artist Dale Chihuly to students. We will be studying his Macchias series of pieces. Watch for these works of art to come home. This is the first of three projects planned for this year, each focusing on very different style and medium. Thank you for supporting this project with donations at last year's Open House.

~Renee Smith, Art Docent Chair

## CHEETAH CHATTER

You can read each month's Cheetah Chatter on the Meridian Park PTSA's website: <http://mpptsa.org/newsletter>. If you have news you would like to appear in the next Cheetah Chatter, please check our online calendar for this month's news deadline date: <http://mpptsa.org/calendar/>. You can email your news to the Cheetah Chatter editors at [cheetahchatter@icloud.com](mailto:cheetahchatter@icloud.com).

## VOLLEYBALL CLUB

The Volleyball Club for 5th and 6th grade students starts November 4th at 8:15 in the gym. Space is still available! Permission slips are available through the main office or Mr. Alford's website.

<http://learn.shorelineschools.org/meridianpark/malford>

~Matt Alford, PE Specialist



---

## PTSA News

---

### MATH CLUB

Math Club is open to all students in grades 3 to 6! Grade 2 students might be admitted, pending discussion with coaches. Math Club meets Wednesday mornings from 8–9 am in Meridian Park classrooms throughout the year, and participates in several off-campus math competitions. For more information and a registration form, visit the MP Math Club website at <http://mpmathclub.com>. For questions, e-mail Math Club Coordinator Ed Goldstick at [mpmathclub@gmail.com](mailto:mpmathclub@gmail.com). Math Club competitions are great mental exercise, and fun. "Being 'Good at Math' is like having a Super Power"!

### DRAMA CLUB 4TH – 6TH GRADERS

Alice in Wonderland - A new musical by Dandylyon Drama's Rob Jones & Melani Lyons

Important Dates to know....

- \* 12/4/14 @ 7:00 pm - Parent Information Meeting:
- \* 12/15/14 – 12/18/14 - Drama Auditions (everyone who signs up gets a part!)
- \* 1/5/15 – Drama Rehearsals begin Monday through Thursday
- \* 1/20/15 – 1/22/15 – Rehearsals held during early release days, 12:00 – 3:30 pm
- \* 2/26/15 – Mandatory Dress Rehearsal @ Shorewood H.S. Theater
- \* 2/27/15 – Drama Performance @ Shorewood H.S. Theater
- \* 2/28/15 – Drama Performance @ Shorewood H.S. Theater

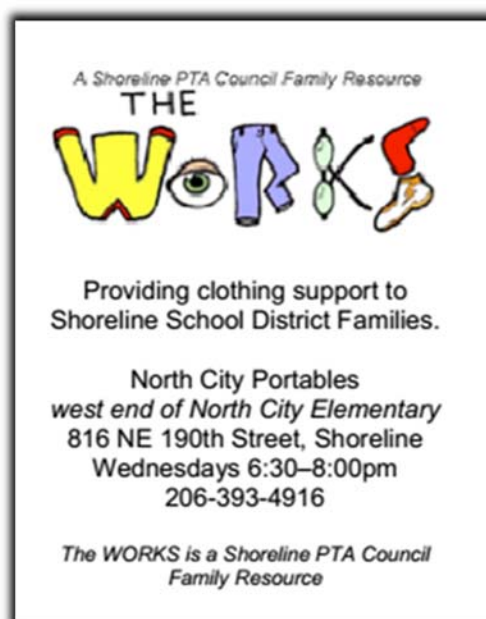
Want to be a co-parent producer? Learn the ropes of organizing a show and helping back stage! Please email Susan Duthweiler @ [sduthweiler@gmail.com](mailto:sduthweiler@gmail.com) if interested.

### THE WORKS FOOD DRIVE

The Works food drive starts December 1st - 12th. Meridian Park's main food staple for the holiday basket food drive is cooking oil. We will be collecting bottles of cooking oil starting December 1st. Stay tuned for more details!

### VOLUNTEER AT THE WORKS

Meridian Park's evening to volunteer at The Works is Wednesday, December 3rd from 6-8pm. This is a great way to meet other Shoreline adults who help make The Works such a success! Contact Tracey Poole at [tracey@stevepoole.com](mailto:tracey@stevepoole.com) if interested.



## Resources for Families

Information on these resources is offered as a service to families—these are not always MP or MP PTSA events or workshops.

### MERIDIAN PARK ELEMENTARY

[schools.shorelineschools.org/  
meridianpark/](http://schools.shorelineschools.org/meridianpark/)

**David Tadlock** *Principal*

[David.Tadlock@shorelineschools.org](mailto:David.Tadlock@shorelineschools.org)

**Hillery Clark**

*Early Childhood Program Manager*

**Diane Randall** *Office Manager*

**Jill Gwazdauskas** *Registrar*

**Susan Goldman** *School Nurses*

**Annie Gage** *Family Advocate*

### 2014–15 MP PTSA EXECUTIVE COMMITTEE

[www.mpptsa.org](http://www.mpptsa.org)

**Kim Ositis & Jill Steinberg**

*Co-Presidents*

[mpptsapresident@gmail.com](mailto:mpptsapresident@gmail.com)

**Jennifer Scott** *VP Clubs & Program*

[mpptsavpprograms@gmail.com](mailto:mpptsavpprograms@gmail.com)

**Dana Doerksen** *VP Events*

[mpptsavpevents@gmail.com](mailto:mpptsavpevents@gmail.com)

**Jennifer Kleyn** *Secretary*

[mpptsasecretary@gmail.com](mailto:mpptsasecretary@gmail.com)

**Adrienne Thompson & Matt Clark**

*Co-Treasurers*

[mpptsatreasurer@gmail.com](mailto:mpptsatreasurer@gmail.com)

### STANDING COMMITTEES

**Lee Lambert** *Grants*

**Adrienne Thompson** *Legislative Chair*

[mpptsalegislativechair@gmail.com](mailto:mpptsalegislativechair@gmail.com)

**Susan Duthweiler** *Membership*

[mpptsamemberships@gmail.com](mailto:mpptsamemberships@gmail.com)

**Mel Williamson & Denise Dana**

*Cheetah Chatter Editors*

[cheetahchatter@icloud.com](mailto:cheetahchatter@icloud.com)

**Frank Kleyn** *Webmaster*

[mpptsawebsite@gmail.com](mailto:mpptsawebsite@gmail.com)

Follow the MP PTSA on Facebook

facebook

### GIRLS' BASKETBALL TRAINING

Girls' basketball training with Hoopaholics girls director Riley Prince is available for girls in 3<sup>rd</sup> through 8<sup>th</sup> grades. All classes are held at Briarcrest Elementary.

3–5<sup>th</sup> Grades: Wednesdays: 5:30–6:30 pm

6–8<sup>th</sup> Grades: Wednesdays: 6:30–7:30 pm

For more information, visit [www.hoopaholics.com](http://www.hoopaholics.com).

### VETERAN'S DAY HOOP CAMP

Hoopaholics camps are designed to build individual and team skills in a fun and safe learning environment. A high emphasis is put on learning the fundamentals of the game, such as footwork, shooting technique, and team defense. Most importantly, the goal is to give young players confidence in their abilities and to foster excitement for the game.

Hoopaholics offers boys camps, girls camps, and positional camps throughout the year. Over the years our academy has received a great turnout of motivated and talented campers who display the characteristics of mental toughness and sportsmanship that we at Hoopaholics represent.

Who: Boys and girls in grades 3<sup>rd</sup> - 8<sup>th</sup>

When: 9 am to noon, November 11<sup>th</sup>

Where: Edmonds Community College

For more information, visit [www.hoopaholics.com](http://www.hoopaholics.com).

### E-FLIERS

The Shoreline School District works with community organizations to provide information to families about not-for-profit services for students and their families. The listing of any organization's flier does not imply that the services they offer have been endorsed by the Shoreline School District. Please contact the not-for-profit organization directly regarding their program offerings.

<http://schools.shorelineschools.org/e-fliers/>

The Cheetah Chatter is Published Monthly by  
Meridian Park Elementary School and the Meridian Park PTSA