

Cheetah Chatter

Published by Meridian Park School & Meridian Park PTSA

MERIDIAN PARK VARIETY SHOW!

Mark your calendars for the 2015 Meridian Park Variety Show! Please join us for an evening of entertainment by our talented Meridian Park students at Shorewood High School Theater, Friday January 9th at 6:30 pm.

FOOD DRIVE

Thank you Meridian Park families for supporting the Shoreline PTA Council Holiday Basket Toy and Teen Gift food drive! Meridian Park donated 460 items, including 118 bottles of cooking oil. 510 Shoreline families were served, so your donations are very much appreciated. A loud Cheetah Cheer for everyone who participated in collecting, sorting, and delivering the items: Callie Steward, Derrick Murrell, Jennifer Scott, Tracey Johnson, Jill Steinberg, Isabel Kaplan, and Rachel Kaplan.

SAFESCHOOLS ALERT

Safety is one of our district's top priorities. We're taking an important step to help safeguard our school community, and we want to share access information with you.

Effective January 1, 2015, our district is using *SafeSchools Alert*, a tip reporting service that allows students, staff, and parents to submit safety concerns to our administration four different ways:

- * **Phone:** **206.317.5768**
- * **Text:** Text your tip to **206.317.5768**
- * **Email:** **1261@alert1.us**
- * **Web:** **<http://1261.alert1.us>**

You and your children can easily use SafeSchools Alert to report tips on bullying, harassment, drugs, vandalism or any safety issue that concerns you. Tips may be submitted with contact information or anonymously.

Every tip SafeSchools Alert receives about our district is immediately logged and our administration is notified by email so that they can investigate and take appropriate action. For emergencies, please call 911!

Together, using SafeSchools Alert, we can make our schools a safer place to work and learn!

INSIDE THIS ISSUE

Announcements	1
Principal's Letter	2
Meridian Park News	3
Cheetah Notes	4
PTSA President's Letter	6
District News.....	7
Resources for Families	8

UPCOMING EVENTS

January 8

6:30 pm
Shoreline Center
Reflections Reception

January 9

6:00 – 9:00 pm
Shorewood H.S. Theater
Variety Show

January 13

6:30 pm
Shoreline Special Needs PTA Meeting

January 14

7:00 pm
Meridian Park Gymnasium
5th Grade Band/Orchestra Concert

January 16

Martin Luther King Assembly

January 19

Martin Luther King Day
No School

January 19

Olympia
PTA Legislative Assembly

January 20 – 23

11:45am Early dismissal
Parent/Teacher Conferences

January 21

4:15 pm – 5:30 pm
Honor Band Rehearsal

January 24

10:00 am – 12:00 pm
Shoreline Center
Kinderfest Kindergarten Fair

January 26

No School

February 3

7:00 – 8:30 pm
MP Library
PTSA Meeting

Principal's Letter

Dear Families,

Welcome back for a wonderful new year in 2015!

Conferences begin January 20, and if you're not scheduled, please contact your teacher right away: *our goal is 100% participation.* The purpose is to discuss academic progress. Before the conference, please review your child's recent report card and identify a few talking points. It might also help to review the additional info sent home with report cards. While this is the final scheduled conference for this school year, we are always happy to visit with you individually about your student's progress or other questions as needed.

Safety is our #1 priority. While we believe our building and campus are very safe from unwelcome visitors, we are committed to making every effort to ensure our students, staff, and volunteers are safe each and every day. As a reminder, entry to the building is allowed through the main entrance only and we require all visitors to sign-in and wear a pass every time you visit the building. We appreciate our frequent visitors and volunteers, and we appreciate sign-in and pass during every visit, if only for a few minutes. Thanks.



This month we celebrate the life and legacy of Dr. Martin Luther King, Jr. In our classrooms we regularly utilize activities to celebrate the many cultures, talents, and traditions of families and our community. We hope you will join us in teaching acceptance and appreciation of all people; as well as reinforcing our expectations of respect, kindness, and compassion.

Also this month, we are completing mid-year reading and math formative assessments. Formative means "information," and these assessments provide information to guide our instruction and interventions. The reading assessment is called DIBELS (dynamic indicator of

basic early literacy) and the math assessment is called EasyCBM (curriculum based measurement). DIBELS is a national reading rate/fluency tool; CBM is a national concepts and procedures tool. You can learn more at:

<https://dibels.uoregon.edu/> and
<http://easycbm.com/>.

Our state and district are making the shift to the Common Core Standards. Developed by education experts from 45 states, these K-12 learning standards go deeper into key concepts in math and English language arts. You can learn more at <http://www.k12.wa.us/CoreStandards/default.aspx>.

We are committed to regular communication and information, and we rely heavily on email and websites. We encourage you to set your inbox and browser for easy access to information. It's helpful to keep Office Secretary Jill updated about family phone numbers and email addresses.

Office: jill.gwazdauskas@shorelineschools.org

District: www.shorelineschools.org

MP: www.shorelineschools.org/meridianpark/

PTA: http://mpptsa.org/Home_Page.html

Links: [teachers](#), [library](#), [principal](#), and [others](#).

Please call or email Jill when your child(ren) are ill; same day contact by 10:00 am is very helpful.

Thanks for supporting our work together, and we look forward to seeing everyone at our Variety Show and conferences. While specific questions are best directed to the staff member closest to the situation, feel free to contact me anytime on how things are going. I'm grateful to lead this wonderful school community. Best wishes to you and your family for a great year in 2015.

~David Tadlock, Principal

david.tadlock@shorelineschools.org

Shoreline School District #412 does not discriminate against any protected classes. For further information on notice of non-discrimination, including the address and phone number of the Title IX officer, visit: www.shorelineschools.org/info/title_ix.php.

Meridian Park News

FAMILIES, FRIENDS, AND FEELINGS

Happy New Year!

Although I've been busy on campus, this is my first column in the Chatter yet this school year.

Allow me to introduce (and re-introduce) myself. My name is Annie Gage and this is my fifth year as Meridian Park's Family Advocate. It is such a privilege to watch your children grow up!

What's a Family Advocate, you may wonder? I'm like a blend of a Family Support Worker and a School Counselor.

In the Family Support Worker part of my job, I help parents connect with community resources such as food banks, eviction prevention programs, or mental health counseling. I give emotional support to parents as they navigate various social and legal systems.

In the School Counselor part of my job, I provide emotional and social support to students and their families, particularly as it relates to school success. This might include helping students solve friendship problems, providing information about child development to parents, or helping a new student get comfortable here during his or her first days of school.

I teach Second Step, a social skills curricula, in seven classrooms, and Roots of Empathy, which is a bullying prevention curriculum, in three.

I try to be familiar with as many of Meridian Park's 550 students as possible. To that end, I spend time at lunch and on the playground, and have frequent "Lunch Bunches" in my office. At Lunch Bunch, ten or more students have lunch in my office and we pass a "thumb ball" as an ice breaker. Students can sign up to indicate they are interested in participating.

I am here every day from 8:30 am - 4:30 pm. Feel free to contact me with questions or concerns. If I don't know something, I can usually find someone who does!

~Annie Gage, MSW

206.393.1768

annie.gage@shorelineschools.org

PLEASE NOTE

- * No school on Monday, January 19 for the Dr. King Holiday.
- * Beginning January 20 and all week, students will be dismissed at 11:45 am.
*** Please double check your pick-up and afternoon care plans and please review with your child(ren). ***
- * No school on Monday, January 26 for district professional development.

**Dismissal
on early
release is
always at
11:45 am**

LOST & FOUND

Please visit lost and found to pick up any lost items. All remaining items will be donated to The Works on Friday, January 9th.



Cheetah Notes

A NOTE FROM THE LIBRARY

Dear Meridian Park Families,

Happy New Year! If your child is working on a "New Year's Resolution" to read more, here is some information to help you.

* **Meridian Park Library Cards for Parents**

- * Stop by the library to set up an account for yourself. Parents can check out three books at a time. Choose some books to read with your child(ren).

* **King County Library Cards for Children**

- * If your child does not yet have a King County Library System card, I can help with the process of getting one. Besides being able to check out books at the Shoreline and Richmond Beach libraries, students can also use the databases available through the library. Start by having your child ask me for an application, or stop by and pick one up. Applications are available in many languages.

* **Recommended websites** for lists of books for children of all ages

- * Reading is Fundamental (rif.org), the
- * Public Broadcasting System (PBS) site for parents (pbs.org/parents/education)
- * Reading Rockets (readingrockets.org)

* **Reading Counts** quizzes

- * Encourage your children to read books from our library that have Reading Counts quizzes. Stop by the library to learn more about the Reading Counts independent reading program.

Happy Reading,

~Jenny Hillger, Library Media Specialist



Cheetah Notes

NOTES FROM THE MUSIC ROOM

Happy New Year 2015 to you and your family!

Congratulations to 6th grade students for their great performance at the Winter Sing-along assembly on December 18!

Spring brings exciting musical opportunities to your kids and your family!

Important Dates:

Please put these on your family calendar:

- * Meridian Park Arts Festival May 28, 2015. 2nd - 5th grade concert, 6:45 pm.
 - * All 2nd, 3rd, 4th, and 5th grade students attend and perform at this concert.
- * 5th grade students will attend field trip to The Seattle Symphony, Tuesday, May 12.
 - * (This includes 4th grade students in Ms. Parks' 4th grade/ 5th grade class)
- * 6th grade students will participate in various Shoreline School District Music festivals. More information to come!
 - * West Side Band Festival Tuesday February 3
 - * District Orchestra Festival Tuesday February 10
 - * West Side Choral Festival Thursday March 5
- * 6th grade students also perform for parents at their moving up assembly in June.

~Mrs. Anderson and The Meridian Park Singing Cheetahs!

NOTES FROM BAND AND ORCHESTRA

Dear MP & Cascade Friends and Families,

You are invited to join our 5th grade band and orchestra for their first ever public performance. This will be an evening to feature our newest 5th grade musicians in their own concert at school. Ms. Jobst (band director) and Miss Ault (orchestra director) will explain to the audience how we teach and learn the beginning playing skills in our classes. The concert will last about 45 minutes. This special evening will be both a demonstration and a performance for you, by the students. You will be impressed with the talents in the band and orchestra groups, and it's always an exciting night when the students perform for their first time in public!

Please join us on the evening of Wednesday, January 14th at 7:00 pm for the 5th grade band and orchestra concert. The performances will be exciting!

P.S. Our 6th graders are working on music for their separate festival concerts, which will be held in early February and March. We will get the information to you soon.

Thanks for your support,

~Ms. Jobst (band) and Miss Ault (orchestra)

PTSA President's Letter

Happy New Year from the Meridian Park PTSA!

We hope that everyone will attend the Meridian Park Variety Show this Friday (January 9th) at 6:30 pm at the Shorewood Theater for an evening of amazing talent! This is a free event and all are welcome!

Speaking of talented kids, the 4th – 6th grade drama club play is coming soon! Auditions and rehearsals started last month with performances of "Alice in Wonderland" scheduled for February 27th and February 28th at 7:00 pm at the Shorewood Theater. Tickets will go on sale in February.

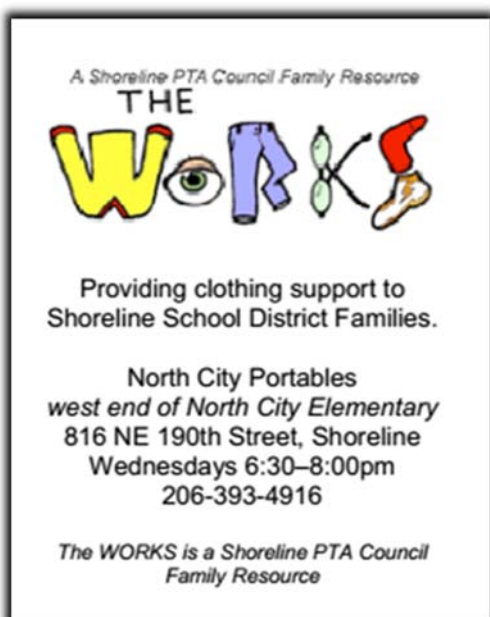
Have you thought about being part of the PTSA leadership team? The Nominating Committee was recently elected to recruit candidates to run for office in 2015-2016. If you are interested or have questions, please contact us at mpptsapresident@gmail.com and we will get you in touch with the Nominating Committee.

At the beginning of the year, the PTSA presented an ambitious set of strategic goals to the general membership. We are pleased to announce that we have already accomplished two of the five goals! Read the full Strategic Planning Goals document at: <http://mpptsa.org/documents/standing-rules-and-budget-documents/>.

Goal #1 was to establish a robust parent volunteer database with at least 50 names of volunteers for events and projects. Thank you to the efforts of our dynamic Volunteer Coordinator Callie Steward and her amazing volunteers, we have met this goal! Goal #2 was to increase membership by 20% (27 members) by year-end. We have exceeded this goal at the halfway mark with a total membership of 162 members, compared to 131 for last year. It's never too late to join the PTSA (<http://mpptsa.org/join/>) and show your support for Meridian Park students!

The next PTSA Board of Directors meeting will be Tuesday, February 3rd at 7:00 pm. Our regular monthly Board of Directors meetings are held on the first Tuesday of the month from 7:00 - 8:30 pm in the Library. YMCA provides free childcare and all of our meetings are open to the public.

~Kim Ositis
~ Jill Steinberg
Co-Presidents, 2014-2015
mpptsapresident@gmail.com
206-229-7948



District News

Welcome to Kindergarten!

KINDERFEST 2015

Kinderfest is an opportunity for parents who will be enrolling their children in kindergarten to hear about the kindergarten program offered by the Shoreline School District. Kinderfest is Saturday, January 24, 2015 from 10:00 am to 12:00 pm in the Shoreline Room at the Shoreline Center, 18560 - 1st Ave NE.

Kindergarten registration for Shoreline residents with students starting kindergarten in the fall of 2015 begins Monday, February 2nd at all elementary schools. *You must register at your neighborhood/home school.* To register you need to have the following:

- * Proof of age (e.g. birth certificate or passport)
- * Proof of residency (e.g. utility bill, tax statement)
- * Enrollment paperwork, which can be picked up at Kinderfest or at the time of enrollment. The following information will be needed to complete the enrollment paperwork:
 - * Name, address, and phone number of child's doctor and dentist
 - * Child's health history, including immunization records
 - * Parent's/Guardian's telephone (day and evening)

To attend kindergarten in the fall, a child must be five years old by August 31, 2015. All elementary schools in the district will have kindergarten visitations on January 28, 2015 at 9:30 am. Letting your home school know that you are attending the visitation is not necessary, but highly appreciated for planning purposes.

For students living outside of the Shoreline School District, kindergarten registration also begins on Monday, February 2nd. Registration and transfer request paperwork must be submitted to the Instruction Department of the Shoreline School District, which is located at the Shoreline Center. The Instruction office is open between 7:30 am and 4:30 pm. Families will be notified by the middle of April as to the status of their request. For more information about kindergarten registration and Kinderfest, please contact Cathy Allred at **206.393.4211** or cathy.allred@shorelineschools.org.

All elementary schools in the district will have kindergarten visitations on January 28, 2015 at 9:30 am.

Letting your home school know that you are attending the visitation is not necessary, but highly appreciated for planning purposes.

Resources for Families

Information on these resources is offered as a service to families—these are not always MP or MP PTSA events or workshops.

MERIDIAN PARK ELEMENTARY

[schools.shorelineschools.org/
meridianpark/](http://schools.shorelineschools.org/meridianpark/)

David Tadlock *Principal*

David.Tadlock@shorelineschools.org

Hillery Clark

Early Childhood Program Manager

Diane Randall *Office Manager*

Jill Gwazdauskas *Registrar*

Susan Goldman *School Nurse*

Annie Gage *Family Advocate*

2014–15 MP PTSA EXECUTIVE COMMITTEE

www.mpptsa.org

Kim Ositis & Jill Steinberg

Co-Presidents

mpptsapresident@gmail.com

Jennifer Scott *VP Clubs & Program*

mpptsavpprograms@gmail.com

Dana Doerksen *VP Events*

mpptsavpevents@gmail.com

Jennifer Kleyn *Secretary*

mpptsasecretary@gmail.com

Adrienne Thompson & Matt Clark

Co-Treasurers

mpptsatreasurer@gmail.com

STANDING COMMITTEES

Lee Lambert *Grants*

Adrienne Thompson *Legislative Chair*

mpptsalegislativechair@gmail.com

Susan Duthweiler *Membership*

mpptsamemberships@gmail.com

Mel Williamson & Denise Dana

Cheetah Chatter Editors

cheetahchatter@icloud.com

Frank Kleyn *Webmaster*

mpptsawebsite@gmail.com

Follow the MP PTSA on Facebook

facebook

PHYSICAL POETRY

Shorecrest Hip Hop Dance Team once again is gearing up for their major fundraiser, *Physical Poetry* January 9 & 10, 2015 at 7:30 pm in the Shorecrest Performing Arts Center.

Physical Poetry consistently delivers exciting pieces and dancers to an always sold-out crowd. Professional dance companies from the greater Seattle area highlight the weekend's agenda. Exciting, heart-stopping, foot-stomping dance forms including hip hop, jazz, lyrical, tap, tango, salsa, modern, and many others, guarantee to keep attendees on the edge of their seats anticipating more. We encourage you to purchase tickets ahead of time as tickets go fast at the door.

Purchase Tickets:

<http://physicalpoetry2015.brownpapertickets.com/>

\$15 Advance Pre-sale. \$18 at the door.

5TH GRADE SKI & RIDE FREE PROGRAM POWERED BY CARTER SUBARU

Falling in love with the mountains through skiing and snowboarding can be life-changing, and that's why Stevens Pass and Carter Subaru have teamed up to offer FREE season passes to Washington State's 5th Graders. We want to inspire more youth to get out on the slopes to promote family bonding, healthy recreational activities and an appreciation of our stunning landscape.

To order a 5th Grader Season Pass, please call **206.812.4510, Ext. 4351**.

Free Season Pass: Any 5th Grader in Washington State is eligible for a free season pass any time he or she visits Stevens Pass during the 2014-15 winter season.

Proof of Eligibility: Must have proof of 5th grade enrollment for the child (report card, school ID, teacher note, or certified letter of intent).

Participants must be between the ages of 9 and 11 as of December 31, 2014 to qualify for the 2014-15 5th Grade Ski and Ride Free Season Pass Program.

The Cheetah Chatter is Published Monthly by
Meridian Park Elementary School and the Meridian Park PTSA